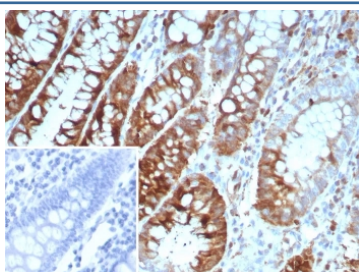


Oncoprotein 18 Antibody / OP18 / Stathmin 1 [clone STMN1/8439] (V5506)

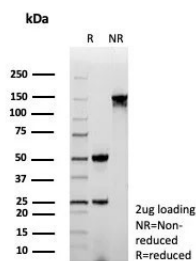
Catalog No.	Formulation	Size
V5506-100UG	0.2 mg/ml in 1X PBS with 0.1 mg/ml BSA (US sourced), 0.05% sodium azide	100 ug
V5506-20UG	0.2 mg/ml in 1X PBS with 0.1 mg/ml BSA (US sourced), 0.05% sodium azide	20 ug
V5506SAF-100UG	1 mg/ml in 1X PBS; BSA free, sodium azide free	100 ug

[Bulk quote request](#)

Availability	1-3 business days
Species Reactivity	Human
Format	Purified
Clonality	Monoclonal (mouse origin)
Isotype	Mouse IgG2b, kappa
Clone Name	STMN1/8439
Purity	Protein A/G affinity
UniProt	P16949
Localization	Cytoplasm, Cytoskeleton
Applications	Immunohistochemistry (FFPE) : 1-2ug/ml
Limitations	This Oncoprotein 18 antibody is available for research use only.



IHC staining of FFPE human colon carcinoma tissue with Oncoprotein 18 antibody (clone STMN1/8439). Inset: PBS used in place of primary Ab (secondary Ab negative control).



SDS-PAGE analysis of purified, BSA-free Oncoprotein 18 antibody (clone STMN1/8439) as confirmation of integrity and purity.

Description

Op18 (for oncoprotein 18, also designated stathmin, prosolin or metablastin) is a conserved, Tubulin-associated, intracellular phosphoprotein. Many different phosphorylated forms of Op18 are observed, and it is expressed as two different isoforms. Op18 is considered a critical regulator of microtubulin dynamics and is downregulated by p53. It serves as a transducing protein, via phosphorylation, for a variety of cell signaling pathways and is involved in both mitosis and differentiation. Op18 is present in many cancers, including breast carcinomas, and is highly expressed in acute leukemias of different subtypes.

Application Notes

Optimal dilution of the Oncoprotein 18 antibody should be determined by the researcher.

Immunogen

A recombinant fragment of human Stathmin 1 protein was used as the immunogen for the Oncoprotein 18 antibody.

Storage

Aliquot the Oncoprotein 18 antibody and store frozen at -20oC or colder. Avoid repeated freeze-thaw cycles.