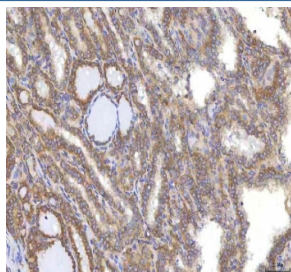


## Oncomodulin 1 Antibody / OCM (RQ8812)

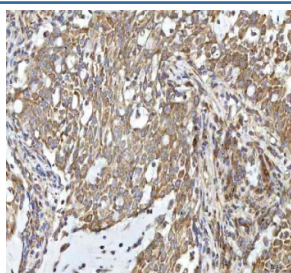
Catalog No.	Formulation	Size
RQ8812	0.5mg/ml if reconstituted with 0.2ml sterile DI water	100 ug

**Bulk quote request**

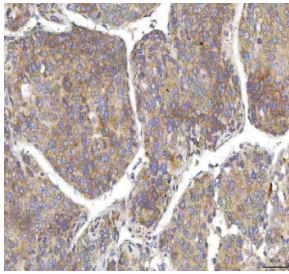
<b>Availability</b>	1-3 days
<b>Species Reactivity</b>	Human
<b>Format</b>	Antigen affinity purified
<b>Clonality</b>	Polyclonal (rabbit origin)
<b>Isotype</b>	Rabbit IgG
<b>Purity</b>	Antigen affinity chromatography
<b>Buffer</b>	Lyophilized from 1X PBS with 2% Trehalose
<b>UniProt</b>	P0CE72
<b>Localization</b>	Cytoplasm
<b>Applications</b>	Immunohistochemistry (FFPE) : 2-5ug/ml ELISA : 0.1-0.5ug/ml
<b>Limitations</b>	This Oncomodulin 1 antibody is available for research use only.



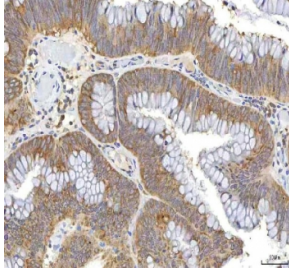
IHC staining of FFPE human thyroid cancer tissue with Oncomodulin 1 antibody. HIER: boil tissue sections in pH8 EDTA for 20 min and allow to cool before testing.



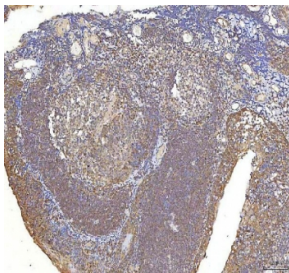
IHC staining of FFPE human lung cancer tissue with Oncomodulin 1 antibody. HIER: boil tissue sections in pH8 EDTA for 20 min and allow to cool before testing.



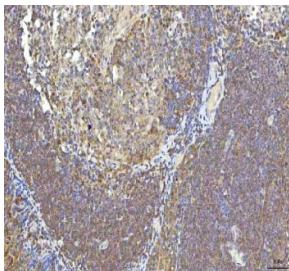
IHC staining of FFPE human liver cancer tissue with Oncomodulin 1 antibody. HIER: boil tissue sections in pH8 EDTA for 20 min and allow to cool before testing.



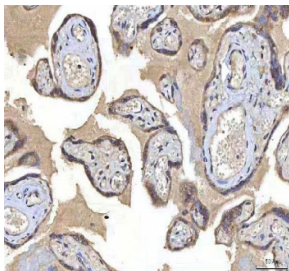
IHC staining of FFPE human colon adenocarcinoma tissue with Oncomodulin 1 antibody. HIER: boil tissue sections in pH8 EDTA for 20 min and allow to cool before testing.



IHC staining of FFPE human tonsil tissue with Oncomodulin 1 antibody. HIER: boil tissue sections in pH8 EDTA for 20 min and allow to cool before testing.



IHC staining of FFPE human tonsil tissue with Oncomodulin 1 antibody. HIER: boil tissue sections in pH8 EDTA for 20 min and allow to cool before testing.



IHC staining of FFPE human placental tissue with Oncomodulin 1 antibody. HIER: boil tissue sections in pH8 EDTA for 20 min and allow to cool before testing.

## Description

Oncomodulin is a high-affinity calcium ion-binding protein. It belongs to the superfamily of calmodulin proteins, also known as the EF-hand proteins. Oncomodulin is an oncodevelopmental protein found in early embryonic cells in the placenta and also in tumors.

## Application Notes

Optimal dilution of the Oncomodulin 1 antibody should be determined by the researcher.

## Immunogen

An E.coli-derived human recombinant protein (amino acids M1-S110) was used as the immunogen for the Oncomodulin 1 antibody.

## Storage

After reconstitution, the Oncomodulin 1 Antibody can be stored for up to one month at 4oC. For long-term, aliquot and store at -20oC. Avoid repeated freezing and thawing.