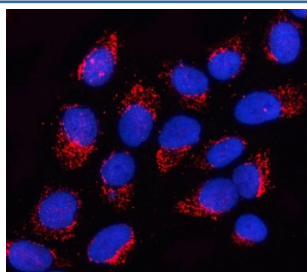


OGDHL Antibody / 2-Oxoglutarate dehydrogenase-like (RQ7954)

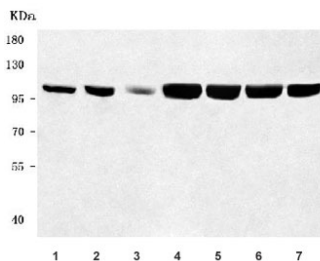
Catalog No.	Formulation	Size
RQ7954	0.5mg/ml if reconstituted with 0.2ml sterile DI water	100 ug

Bulk quote request

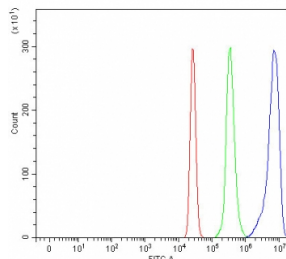
Availability	1-3 business days
Species Reactivity	Human, Mouse, Rat
Format	Antigen affinity purified
Clonality	Polyclonal (rabbit origin)
Isotype	Rabbit IgG
Purity	Antigen affinity purified
Buffer	Lyophilized from 1X PBS with 2% Trehalose
UniProt	Q9ULD0
Localization	Cytoplasm
Applications	Western Blot : 0.5-1ug/ml Flow Cytometry : 1-3ug/million cells Immunofluorescence : 5ug/ml Direct ELISA : 0.1-0.5ug/ml
Limitations	This OGDHL antibody is available for research use only.



Immunofluorescent staining of FFPE human U-2 OS cells with OGDHL antibody (red) and DAPI nuclear stain (blue). HIER: steam section in pH6 citrate buffer for 20 min.



Western blot testing of 1) human HepG2, 2) human SH-SY5Y, 3) human U-2 OS, 4) rat brain, 5) rat kidney, 6) mouse brain and 7) mouse kidney tissue lysate with OGDHL antibody. Predicted molecular weight: 91-114 kDa (multiple isoforms).



Flow cytometry testing of human U937 cells with OGDHL antibody at 1ug/million cells (blocked with goat sera); Red=cells alone, Green=isotype control, Blue= OGDHL antibody.

Description

The protein encoded by this gene is similar to oxoglutarate dehydrogenase (OGDH) of the OGDH complex, which degrades glucose and glutamate. This gene encodes several isoforms, including some that appear to localize to mitochondria. The encoded protein down-regulates the AKT signaling cascade and can suppress the growth of cervical cancer cells.

Application Notes

Optimal dilution of the OGDHL antibody should be determined by the researcher.

Immunogen

E. coli-derived recombinant human protein (amino acids M1-F1010) was used as the immunogen for the OGDHL antibody.

Storage

After reconstitution, the OGDHL antibody can be stored for up to one month at 4°C. For long-term, aliquot and store at -20°C. Avoid repeated freezing and thawing.