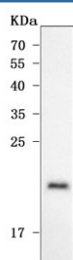


## ODAPH Antibody / Odontogenesis associated phosphoprotein / C4orf26 (RQ7867)

Catalog No.	Formulation	Size
RQ7867	0.5mg/ml if reconstituted with 0.2ml sterile DI water	100 ug

**Bulk quote request**

<b>Availability</b>	1-3 business days
<b>Species Reactivity</b>	Human
<b>Format</b>	Antigen affinity purified
<b>Clonality</b>	Polyclonal (rabbit origin)
<b>Isotype</b>	Rabbit IgG
<b>Purity</b>	Antigen affinity purified
<b>Buffer</b>	Lyophilized from 1X PBS with 2% Trehalose
<b>UniProt</b>	Q17RF5
<b>Applications</b>	Western Blot : 0.5-1ug/ml Direct ELISA : 0.1-0.5ug/ml
<b>Limitations</b>	This ODAPH antibody is available for research use only.



Western blot testing of human placental tissue lysate with ODAPH antibody. Predicted molecular weight ~16 kDa.

### Description

Dental enamel forms the outer cap of teeth and is the hardest substance found in vertebrates. This gene is thought to encode an extracellular matrix acidic phosphoprotein that has a function in enamel mineralization during amelogenesis. Mutations in this gene are associated with recessive hypomineralized amelogenesis imperfecta.

### Application Notes

Optimal dilution of the ODAPH antibody should be determined by the researcher.

## Immunogen

E. coli-derived recombinant human protein (amino acids Q24-S130) was used as the immunogen for the ODAPH antibody.

## Storage

After reconstitution, the ODAPH antibody can be stored for up to one month at 4°C. For long-term, aliquot and store at -20°C. Avoid repeated freezing and thawing.