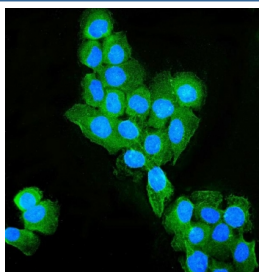


OCN Antibody / Occludin (RQ5746)

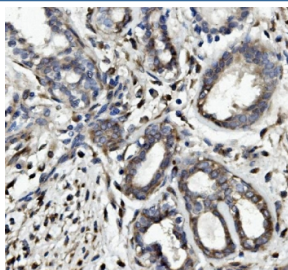
Catalog No.	Formulation	Size
RQ5746	0.5mg/ml if reconstituted with 0.2ml sterile DI water	100 ug

Bulk quote request

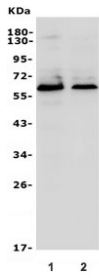
Availability	1-3 business days
Species Reactivity	Human
Format	Antigen affinity purified
Clonality	Polyclonal (rabbit origin)
Isotype	Rabbit IgG
Purity	Affinity purified
Buffer	Lyophilized from 1X PBS with 2% Trehalose and 0.025% sodium azide
UniProt	Q16625
Applications	Western Blot : 0.5-1ug/ml Immunohistochemistry : 1-2ug/ml Immunofluorescence : 2-4ug/ml Flow Cytometry : 1-3ug/million cells Direct ELISA : 0.1-0.5ug/ml
Limitations	This OCLN antibody is available for research use only.



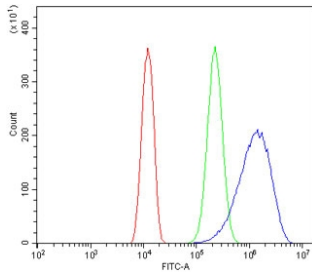
Immunofluorescent staining of FFPE human A431 cells with OCLN antibody (green) and DAPI nuclear stain (blue). HIER: steam section in pH6 citrate buffer for 20 min.



IHC staining of FFPE human breast cancer with OCLN antibody. HIER: boil tissue sections in pH8 EDTA for 20 min and allow to cool before testing.



Western blot testing of human 1) HepG2 and 2) HEK293 cell lysate with OCLN antibody.
Predicted molecular weight ~59 kDa.



Flow cytometry testing of human U-2 OS cells with OCLN antibody at 1ug/million cells (blocked with goat sera); Red=cells alone, Green=isotype control, Blue= OCLN antibody.

Description

Occludin is an integral membrane protein that is located at tight junctions. It is a member of a family of proteins containing the highly conserved Marvel domain, which contains 4 transmembrane-helix regions. This gene is mapped to 5q13.2. Occludin regulates TGF-beta receptor type I localization for efficient TGF-beta-dependent dissolution of tight junctions during epithelial-mesenchymal transitions. Human Occludin is an essential hepatitis C virus (HCV) cell entry factor that is able to render murine cells infectable with HCV glycoproteins. It has been found that occludin is involved in cell migration and functions to recruit active PI3 kinase to the leading edge, resulting in RAC1 activation and formation of lamellipodia.

Application Notes

Optimal dilution of the OCLN antibody should be determined by the researcher.

Immunogen

Recombinant human protein (amino acids H54-K270) was used as the immunogen for the OCLN antibody.

Storage

After reconstitution, the OCLN antibody can be stored for up to one month at 4oC. For long-term, aliquot and store at -20oC. Avoid repeated freezing and thawing.