

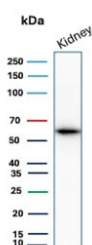
## OCN Antibody / Occludin [clone rOCN/8525] (V5086)

Catalog No.	Formulation	Size
V5086-100UG	0.2 mg/ml in 1X PBS with 0.1 mg/ml BSA (US sourced), 0.05% sodium azide	100 ug
V5086-20UG	0.2 mg/ml in 1X PBS with 0.1 mg/ml BSA (US sourced), 0.05% sodium azide	20 ug
V5086SAF-100UG	1 mg/ml in 1X PBS; BSA free, sodium azide free	100 ug

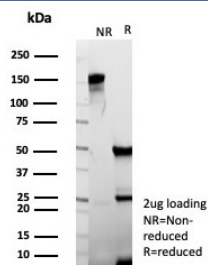
Recombinant **MOUSE MONOCLONAL**

[Bulk quote request](#)

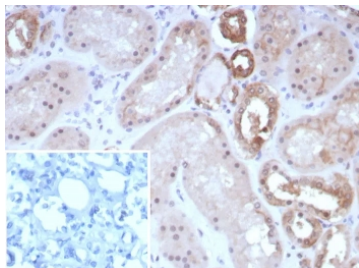
<b>Availability</b>	1-3 business days
<b>Species Reactivity</b>	Human
<b>Format</b>	Purified
<b>Clonality</b>	Recombinant Mouse Monoclonal
<b>Isotype</b>	Mouse IgG1, kappa
<b>Clone Name</b>	rOCN/8525
<b>Purity</b>	Protein A/G affinity
<b>UniProt</b>	Q16625
<b>Localization</b>	Cell Surface, Cytoplasm
<b>Applications</b>	Immunohistochemistry (FFPE) : 1-2ug/ml for 30 min at RT Western Blot : 2-4ug/ml
<b>Limitations</b>	This OCN antibody is available for research use only.



Western blot testing of human kidney tissue lysate with OCN antibody. Predicted molecular weight ~59 kDa.



SDS-PAGE analysis of purified, BSA-free OCLN antibody (clone rOCLN/8525) as confirmation of integrity and purity.



IHC staining of FFPE human kidney tissue with OCLN antibody (clone rOCLN/8525). Inset: PBS used in place of primary Ab (secondary Ab negative control). HIER: boil tissue sections in pH 9 10mM Tris with 1mM EDTA for 20 min and allow to cool before testing.

## Description

Occludin is a tetraspan integral membrane protein in epithelial and endothelial tight junction (TJ) structures that can contain two extracellular loops. The protein exists in a variety of phosphorylated forms. Phosphorylation is involved in regulating both the localization and the function of Occludin. Expression of Occludin is upregulated by polyunsaturated fatty acids, increasing trans-endothelial cell resistance and reducing cellular permeability to large molecules. The level of Occludin varies greatly depending on tissue; in brain tissue, Occludin is highly expressed at cell-cell contact sites. Non-neural tissues show lower expression and discontinuous distribution. Up-regulation of epithelial Occludin may play a role in enhancing paracellular permeability and be related to the damage to the tight junction.

## Application Notes

Optimal dilution of the OCLN antibody should be determined by the researcher.

## Immunogen

A recombinant human protein fragment (within amino acids 282-415) was used as the immunogen for the OCLN antibody.

## Storage

Aliquot the OCLN antibody and store frozen at -20oC or colder. Avoid repeated freeze-thaw cycles.