

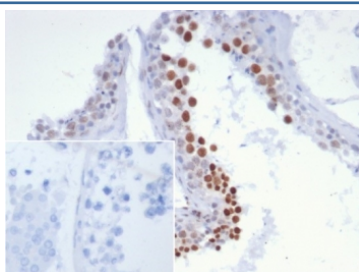
## NUT family member 1 Antibody / NUTM1 [clone SNUPN/7363R] (V4393)

Catalog No.	Formulation	Size
V4393-100UG	0.2 mg/ml in 1X PBS with 0.1 mg/ml BSA (US sourced), 0.05% sodium azide	100 ug
V4393-20UG	0.2 mg/ml in 1X PBS with 0.1 mg/ml BSA (US sourced), 0.05% sodium azide	20 ug
V4393SAF-100UG	1 mg/ml in 1X PBS; BSA free, sodium azide free	100 ug

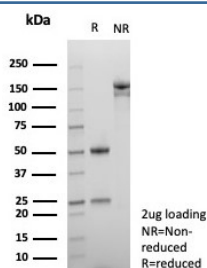
Recombinant **RABBIT MONOCLONAL**

[Bulk quote request](#)

<b>Availability</b>	1-3 business days
<b>Species Reactivity</b>	Human
<b>Format</b>	Purified
<b>Clonality</b>	Recombinant Rabbit Monoclonal
<b>Isotype</b>	Rabbit IgG, kappa
<b>Clone Name</b>	SNUPN/7363R
<b>Purity</b>	Protein A/G affinity
<b>UniProt</b>	Q86Y26
<b>Localization</b>	Nucleus, Cytoplasm
<b>Applications</b>	Immunohistochemistry (FFPE) : 1-2ug/ml for 30 minutes at RT
<b>Limitations</b>	This NUT family member 1 antibody is available for research use only.



IHC staining of FFPE human testis tissue with NUT family member 1 antibody (clone SNUPN/7363R). Inset: PBS used in place of primary Ab (secondary Ab negative control). HIER: boil tissue sections in pH 9 10mM Tris with 1mM EDTA for 20 min and allow to cool before testing.



SDS-PAGE analysis of purified, BSA-free NUT family member 1 antibody (clone SNUPN/7363R) as confirmation of integrity and purity.

## Description

NUTM1 (NUT Midline Carcinoma Family Member 1) is a Protein Coding gene. Diseases associated with NUTM1 include Nut Midline Carcinoma and Spindle Cell Sarcoma. Among its related pathways are Chromatin Regulation / Acetylation. An important paralog of this gene is NUTM2G. Plays a role in the regulation of proliferation. Regulates TERT expression by modulating SP1 binding to TERT promoter binding sites.

## Application Notes

Optimal dilution of the NUT family member 1 antibody should be determined by the researcher.

## Immunogen

A recombinant partial protein sequence (within amino acids 900-1100) from the human protein was used as the immunogen for the NUT family member 1 antibody.

## Storage

Aliquot the NUT family member 1 antibody and store frozen at -20oC or colder. Avoid repeated freeze-thaw cycles.