

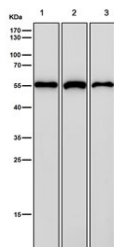
## NUP50 Antibody / Nuclear pore complex protein Nup50 [clone 29N20] (RQ8759)

Catalog No.	Formulation	Size
RQ8759	Antibody in PBS with 0.02% sodium azide, 50% glycerol and 0.4-0.5mg/ml BSA	100 ul

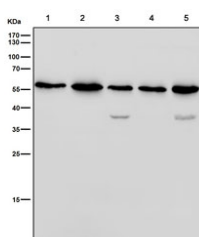
Recombinant **RABBIT MONOCLONAL**

[Bulk quote request](#)

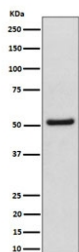
Availability	1-3 days
Species Reactivity	Human, Mouse, Rat
Format	Purified
Clonality	Recombinant Rabbit Monoclonal
Isotype	Rabbit IgG
Clone Name	29N20
Purity	Affinity chromatography
UniProt	Q9UKX7
Applications	Western Blot : 1:500-1:2000
Limitations	This NUP50 antibody is available for research use only.



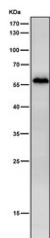
Western blot testing of human 1) HEK 293, 2) ThP-1 and 3) A673 cell lysate with NUP50 antibody. Expected molecular weight: 50-60 kDa.



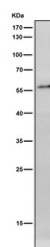
Western blot testing of human 1) HeLa, 2) Jurkat, 3) HePG2, 4) MCF7 and 5) SH-SY5Y cell lysate with NUP50 antibody. Expected molecular weight: 50-60 kDa.



Western blot testing of human HeLa cell lysate with NUP50 antibody. Expected molecular weight: 50-60 kDa.



Western blot testing of mouse ovary tissue lysate with NUP50 antibody. Expected molecular weight: 50-60 kDa.



Western blot testing of rat ovary tissue lysate with NUP50 antibody. Expected molecular weight: 50-60 kDa.

## Description

Component of the nuclear pore complex that has a direct role in nuclear protein import. [UniProt]

## Application Notes

Optimal dilution of the NUP50 antibody should be determined by the researcher.

## Immunogen

A synthetic peptide specific to human Nuclear pore complex protein Nup50 was used as the immunogen for the NUP50 Antibody.

## Storage

Store the NUP50 antibody at -20oC.