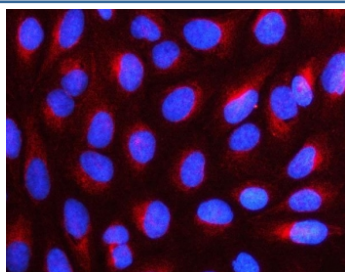


NUDC Antibody (RQ8270)

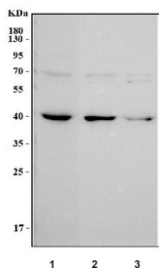
Catalog No.	Formulation	Size
RQ8270	0.5mg/ml if reconstituted with 0.2ml sterile DI water	100 ug

Bulk quote request

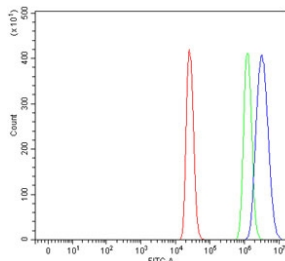
Availability	1-3 business days
Species Reactivity	Human
Format	Antigen affinity purified
Clonality	Polyclonal
Isotype	Rabbit IgG
Purity	Antigen affinity purified
Buffer	Lyophilized from 1X PBS with 2% Trehalose
UniProt	Q9Y266
Localization	Nuclear, cytoplasmic
Applications	Western Blot : 0.5-1ug/ml Immunofluorescence : 5ug/ml Flow Cytometry : 1-3ug/million cells Direct ELISA : 0.1-0.5ug/ml
Limitations	This NUDC antibody is available for research use only.



Immunofluorescent staining of FFPE human U-2 OS cells with NUDC antibody (red) and DAPI nuclear stain (blue). HIER: steam section in pH6 citrate buffer for 20 min.



Western blot testing of human 1) HepG2, 2) K562 and 3) SH-SY5Y cell lysate with NUDC antibody. Predicted molecular weight ~38 kDa.



Flow cytometry testing of fixed and permeabilized human 293T cells with NUDC antibody at 1ug/million cells (blocked with goat sera); Red=cells alone, Green=isotype control, Blue= NUDC antibody.

Description

Nuclear migration protein nudC is a protein that in humans is encoded by the NUDC gene. This gene encodes a nuclear distribution protein that plays an essential role in mitosis and cytokinesis. The encoded protein is involved in spindle formation during mitosis and in microtubule organization during cytokinesis. Pseudogenes of this gene are found on chromosome 2.

Application Notes

Optimal dilution of the NUDC antibody should be determined by the researcher.

Immunogen

An E.coli-derived human recombinant protein (Q176-K267) was used as the immunogen for the NUDC antibody.

Storage

After reconstitution, the NUDC antibody can be stored for up to one month at 4oC. For long-term, aliquot and store at -20oC. Avoid repeated freezing and thawing.