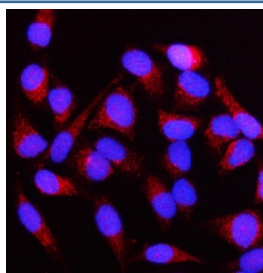


NUBPL Antibody / Nucleotide-binding protein-like (RQ8408)

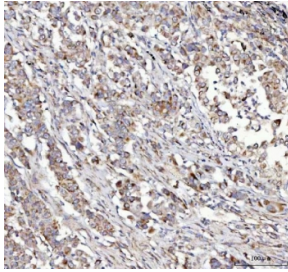
Catalog No.	Formulation	Size
RQ8408	0.5mg/ml if reconstituted with 0.2ml sterile DI water	100 ug

Bulk quote request

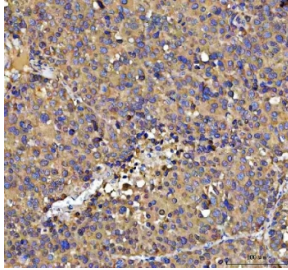
Availability	1-3 business days
Species Reactivity	Human, Mouse
Format	Antigen affinity purified
Clonality	Polyclonal (rabbit origin)
Isotype	Rabbit IgG
Purity	Antigen affinity purified
Buffer	Lyophilized from 1X PBS with 2% Trehalose
UniProt	Q8TB37
Localization	Cytoplasm
Applications	Western Blot : 0.5-1ug/ml Immunohistochemistry (FFPE) : 2-5ug/ml Immunofluorescence : 5ug/ml Flow Cytometry : 1-3ug/million cells ELISA : 0.1-0.5ug/ml
Limitations	This NUBPL antibody is available for research use only.



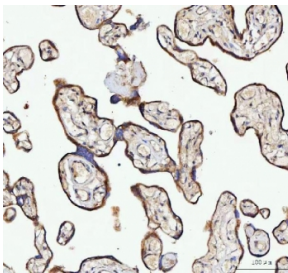
Immunofluorescent staining of FFPE human HeLa cells with NUBPL antibody (red) and DAPI nuclear stain (blue). HIER: steam section in pH6 citrate buffer for 20 min.



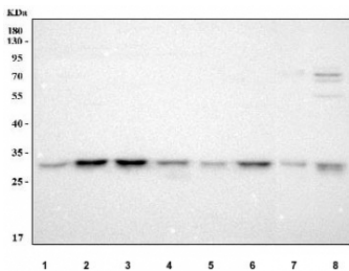
IHC staining of FFPE human lung cancer tissue with NUBPL antibody. HIER: boil tissue sections in pH8 EDTA for 20 min and allow to cool before testing.



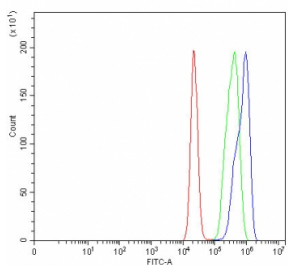
IHC staining of FFPE human liver cancer tissue with NUBPL antibody. HIER: boil tissue sections in pH8 EDTA for 20 min and allow to cool before testing.



IHC staining of FFPE human placental tissue with NUBPL antibody. HIER: boil tissue sections in pH8 EDTA for 20 min and allow to cool before testing.



Western blot testing of human 1) 293T, 2) human T-47D, 3) human HepG2, 4) human A431, 5) human COLO-320, 6) human MCF7, 7) mouse liver and 8) mouse kidney tissue lysate with NUBPL antibody. Predicted molecular weight ~34 kDa.



Flow cytometry testing of fixed and permeabilized human MCF7 cells with NUBPL antibody at 1ug/million cells (blocked with goat sera); Red=cells alone, Green=isotype control, Blue= NUBPL antibody.

Description

This gene encodes a member of the Mrp/NBP35 ATP-binding proteins family. The encoded protein is required for the assembly of the respiratory chain NADH dehydrogenase (complex I), an oligomeric enzymatic complex located in the inner mitochondrial membrane. Mutations in this gene cause mitochondrial complex I deficiency. Alternative splicing results in multiple transcript variants.

Application Notes

Optimal dilution of the NUBPL antibody should be determined by the researcher.

Immunogen

An E.coli-derived human recombinant protein (K59-E319) was used as the immunogen for the NUBPL antibody.

Storage

After reconstitution, the NUBPL antibody can be stored for up to one month at 4oC. For long-term, aliquot and store at -20oC. Avoid repeated freezing and thawing.