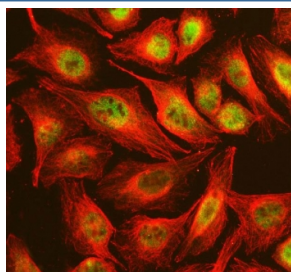


NSMCE2 Antibody / NSE2 / MMS21 (RQ8343)

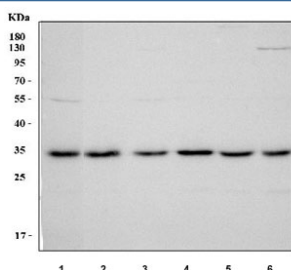
Catalog No.	Formulation	Size
RQ8343	0.5mg/ml if reconstituted with 0.2ml sterile DI water	100 ug

Bulk quote request

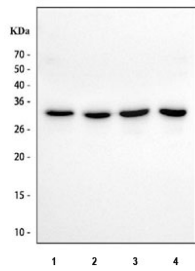
Availability	1-3 business days
Species Reactivity	Human
Format	Antigen affinity purified
Clonality	Polyclonal (rabbit origin)
Isotype	Rabbit IgG
Purity	Antigen affinity purified
Buffer	Lyophilized from 1X PBS with 2% Trehalose
UniProt	Q96MF7
Applications	Western Blot : 0.5-1ug/ml Flow Cytometry : 1-3ug/million cells Immunofluorescence : 5ug/ml Immunoprecipitation : 2ug/500ug of lysate Direct ELISA : 0.1-0.5ug/ml
Limitations	This NSMCE2 antibody is available for research use only.



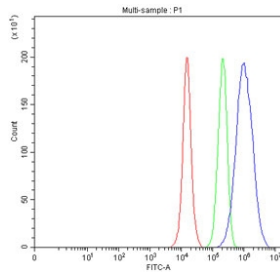
Immunofluorescent staining of FFPE human U-2 OS cells with NSMCE2 antibody (green) and Beta Tubulin mAb (red). HIER: steam section in pH6 citrate buffer for 20 min.



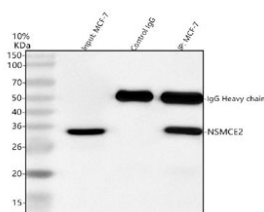
Western blot testing of human 1) MCF7, 2) U-2 OS, 2) A431, 4) K562, 5) A549 and 6) SiHa cell lysate with NSMCE2 antibody. Predicted molecular weight ~28 kDa.



Western blot testing of human 1) MCF7, 2) HEL, 3) U-2 OS and 4) PC-3 cell lysate with NSMCE2 antibody. Predicted molecular weight ~28 kDa.



Flow cytometry testing of fixed and permeabilized human PC-3 cells with NSMCE2 antibody at 1ug/million cells (blocked with goat sera); Red=cells alone, Green=isotype control, Blue= NSMCE2 antibody.



Immunoprecipitation of NSMCE2 protein from 500ug of human MCF7 whole cell lysate with 2ug of NSMCE2 antibody.

Description

This gene encodes a member of a family of E3 small ubiquitin-related modifier (SUMO) ligases that mediates the attachment of a SUMO protein to proteins involved in nuclear transport, transcription, chromosome segregation and DNA repair. The encoded protein is part of the structural maintenance of chromosomes (SMC) 5/6 complex which plays a key role genome maintenance, facilitating chromosome segregation and suppressing mitotic recombination. A knockout of the orthologous mouse gene is lethal prior to embryonic day 10.5. Naturally occurring mutations in this gene, that abolish the SUMO ligase activity, are associated with primordial dwarfism and extreme insulin resistance.

Application Notes

Optimal dilution of the NSMCE2 antibody should be determined by the researcher.

Immunogen

An E.coli-derived human recombinant protein (F14-D228) was used as the immunogen for the NSMCE2 antibody.

Storage

After reconstitution, the NSMCE2 antibody can be stored for up to one month at 4oC. For long-term, aliquot and store at -20oC. Avoid repeated freezing and thawing.

