

NSE Antibody (R30242)

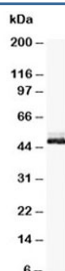
Catalog No.	Formulation	Size
R30242	0.5mg/ml if reconstituted with 0.2ml sterile DI water	100 ug



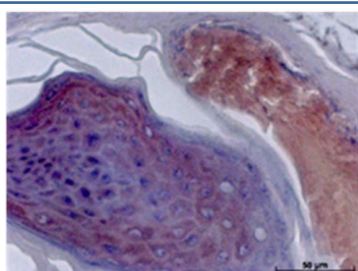
Citations (1)

[Bulk quote request](#)

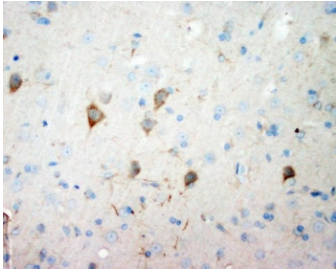
Availability	1-3 business days
Species Reactivity	Human, Mouse, Rat
Format	Antigen affinity purified
Clonality	Polyclonal (rabbit origin)
Isotype	Rabbit IgG
Purity	Antigen affinity
Buffer	Lyophilized from 1X PBS with 2.5% BSA and 0.025% sodium azide/thimerosal
UniProt	P09104
Localization	Cytoplasmic, membranous
Applications	Western Blot : 0.5-1ug/ml IHC (FFPE) : 0.5-1ug/ml
Limitations	This NSE antibody is available for research use only.



Western blot testing of NSE antibody and rat brain tissue lysate. Predicted molecular weight: ~47 kDa.



IHC testing of FFPE mouse skin with NSE antibody.



IHC testing of FFPE rat brain with NSE antibody. HIER: boil tissue sections in pH6, 10mM citrate buffer, for 20 min and allow to cool before testing.

Description

NSE (Neuron specific enolase), also known as Enolase 2 (ENO2), is found in elevated concentrations in plasma in certain neoplasias. The enolases catalyze the interconversion of 2-phosphoglycerate to phosphoenolpyruvate in the glycolytic pathway. ENO2 gene contains 12 exons distributed over 9,213 nucleotides. Human neurone-specific enolase is mapped to chromosome 12p13.

Application Notes

The stated application concentrations are suggested starting amounts. Titration of the NSE antibody may be required due to differences in protocols and secondary/substrate sensitivity.

Immunogen

An amino acid sequence from the C-terminus of human NSE (EARFAGHNFRNPSVL) was used as the immunogen for this NSE antibody (100% homologous in human, mouse and rat).

Storage

After reconstitution, the NSE antibody can be stored for up to one month at 4°C. For long-term, aliquot and store at -20°C. Avoid repeated freezing and thawing.