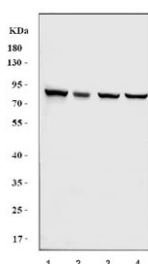


## NSD3 Antibody / Nuclear SET domain-containing protein 3 (RQ6722)

Catalog No.	Formulation	Size
RQ6722	0.5mg/ml if reconstituted with 0.2ml sterile DI water	100 ug

**Bulk quote request**

<b>Availability</b>	1-3 business days
<b>Species Reactivity</b>	Human, Monkey
<b>Format</b>	Antigen affinity purified
<b>Clonality</b>	Polyclonal (rabbit origin)
<b>Isotype</b>	Rabbit IgG
<b>Purity</b>	Antigen affinity purified
<b>Buffer</b>	Lyophilized from 1X PBS with 2% Trehalose
<b>UniProt</b>	Q9BZ95
<b>Applications</b>	Western Blot : 1-2ug/ml Direct ELISA : 0.1-0.5ug/ml
<b>Limitations</b>	This NSD3 antibody is available for research use only.



Western blot testing of 1) human A549, 2) monkey COS-7, 3) human HeLa and 4) human MCF7 cell lysate with NSD3 antibody. Predicted molecular weight: 155-162 kDa (long forms) and ~ 73 kDa (short form).

### Description

Histone-lysine N-methyltransferase NSD3 is an enzyme that in humans is encoded by the WHSC1L1 gene. This gene is related to the Wolf-Hirschhorn syndrome candidate-1 gene and encodes a protein with PWWP (proline-tryptophan-tryptophan-proline) domains. This protein methylates histone H3 at lysine residues 4 and 27, which represses gene transcription. Two alternatively spliced variants have been described.

### Application Notes

Optimal dilution of the NSD3 antibody should be determined by the researcher.

## Immunogen

Recombinant human protein (amino acids Q46-K1425) was used as the immunogen for the NSD3 antibody.

## Storage

After reconstitution, the NSD3 antibody can be stored for up to one month at 4oC. For long-term, aliquot and store at -20oC. Avoid repeated freezing and thawing.