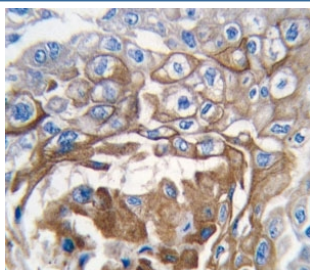


NRAS Antibody (F50734)

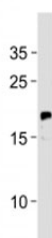
Catalog No.	Formulation	Size
F50734-0.4ML	In 1X PBS, pH 7.4, with 0.09% sodium azide	0.4 ml
F50734-0.08ML	In 1X PBS, pH 7.4, with 0.09% sodium azide	0.08 ml

[Bulk quote request](#)

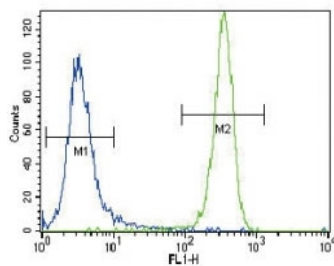
Availability	1-3 business days
Species Reactivity	Human
Predicted Reactivity	Pig
Format	Purified
Clonality	Polyclonal (rabbit origin)
Isotype	Rabbit Ig
Purity	Purified
UniProt	P01111
Applications	Western Blot : 1:1000 IHC (Paraffin) : 1:10-1:50 Flow Cytometry : 1:10-1:50
Limitations	This NRAS antibody is available for research use only.



IHC analysis of FFPE human lung carcinoma tissue stained with NRAS antibody



NRAS antibody western blot analysis in MCF-7 lysate. Predicted molecular weight ~21 kDa.



NRAS antibody flow cytometric analysis of NCI-H460 cells (green) compared to a [negative control](http://www.nsjbio.com/search_result.php?search_txt=n1001) (blue). FITC-conjugated goat-anti-rabbit secondary Ab was used for the analysis.

Description

NRAS is a membrane protein that shuttles between the Golgi apparatus and the plasma membrane. This shuttling is regulated through palmitoylation and depalmitoylation by the ZDHHC9-GOLGA7 complex. This protein, which has intrinsic GTPase activity, is activated to a GTP-bound form by a GTPase activating protein and inactivated to a GDP-bound form by a guanine nucleotide-exchange factor. Defects in the gene encoding this protein are a cause of juvenile myelomonocytic leukemia (JMML).

Application Notes

Titration of the NRAS antibody may be required due to differences in protocols and secondary/substrate sensitivity.

Immunogen

A portion of amino acids 147-179 from the human protein was used as the immunogen for this NRAS antibody.

Storage

Aliquot the NRAS antibody and store frozen at -20°C or colder. Avoid repeated freeze-thaw cycles.