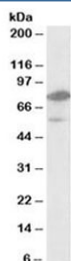


NR1H2 Antibody (R36072)

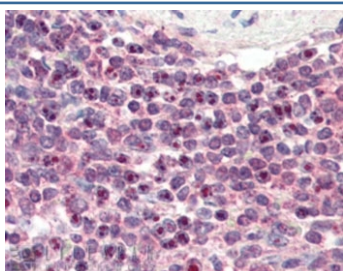
Catalog No.	Formulation	Size
R36072-100UG	0.5 mg/ml in 1X TBS, pH7.3, with 0.5% BSA (US sourced) and 0.02% sodium azide	100 ug

[Bulk quote request](#)

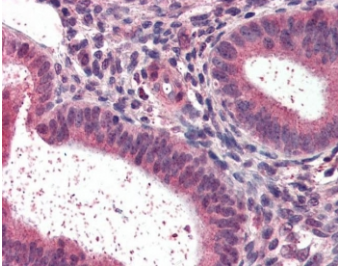
Availability	1-3 business days
Species Reactivity	Human
Predicted Reactivity	Mouse, Rat, Dog
Format	Antigen affinity purified
Clonality	Polyclonal (goat origin)
Isotype	Goat Ig
Purity	Antigen affinity
Gene ID	7376
Applications	Western Blot : 1-3ug/ml Immunohistochemistry (FFPE) : 3ug/ml ELISA (peptide) LOD : 1:64000
Limitations	This NR1H2 antibody is available for research use only.



Western blot testing of human bone marrow lysate with NR1H2 antibody at 1ug/ml. Predicted molecular weight: ~51 kDa. The ~60/80 kDa observed band size is likely due to acetylation.



IHC staining of FFPE human spleen with NR1H2 antibody at 3ug/ml. HIER: steamed with pH6 citrate buffer, AP-staining.



IHC staining of FFPE human uterus with NR1H2 antibody at 3ug/ml. HIER: steamed with pH6 citrate buffer, AP-staining.

Description

Additional name(s) for this target protein: Nuclear receptor subfamily 1, group H, member 2; LXRb; LXR beta

Application Notes

Optimal dilution of the NR1H2 antibody should be determined by the researcher.

Immunogen

Amino acids SSPTTSSLDTPLPGC were used as the immunogen for this NR1H2 antibody. This sequence is specific to NR1H2/LXR beta and will not cross react with LXR alpha.

Storage

Aliquot and store the NR1H2 antibody at -20oC.

References (1)