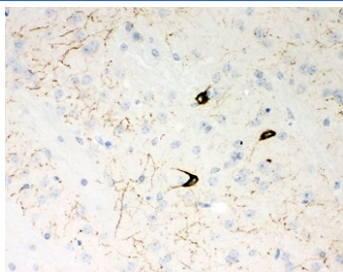


NPY Antibody / Neuropeptide Y (R31709)

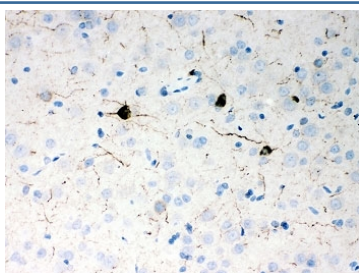
Catalog No.	Formulation	Size
R31709	0.5mg/ml if reconstituted with 0.2ml sterile DI water	100 ug

Bulk quote request

Availability	1-3 business days
Species Reactivity	Human, Mouse, Rat
Format	Antigen affinity purified
Clonality	Polyclonal (rabbit origin)
Isotype	Rabbit IgG
Purity	Antigen affinity
Buffer	Lyophilized from 1X PBS with 2.5% BSA and 0.025% sodium azide
Gene ID	4852
Localization	Cytoplasmic & secreted
Applications	IHC (FFPE) : 0.5-1ug/ml Western Blot (recombinant Protein) : 0.5-1ug/ml
Limitations	This NPY antibody is available for research use only.



IHC-P: NPY antibody testing of mouse brain tissue



IHC-P: NPY antibody testing of rat brain tissue



Western blot testing of 0.5ng/lane of human recombinant protein with NPY antibody.
Predicted molecular weight ~11 kDa.

Description

Neuropeptide Y is widely expressed in the central nervous system and influences many physiological processes, including cortical excitability, stress response, food intake, circadian rhythms, and cardiovascular function. The neuropeptide functions through G protein-coupled receptors to inhibit adenylyl cyclase, activate mitogen-activated protein kinase (MAPK), regulate intracellular calcium levels, and activate potassium channels. A polymorphism in this gene resulting in a change of leucine 7 to proline in the signal peptide is associated with elevated cholesterol levels, higher alcohol consumption, and may be a risk factor for various metabolic and cardiovascular diseases. Neuropeptide Y also exhibits antimicrobial activity against bacteria and fungi.

Application Notes

The stated application concentrations are suggested starting amounts. Titration of the NPY antibody may be required due to differences in protocols and secondary/substrate sensitivity.

Immunogen

An amino acid sequence from the middle region of human Neuropeptide Y (YPSKPDNPGEDAPAEDMARYYSALRHYINLITRQRY) was used as the immunogen for this NPY antibody (100% homologous in human, mouse and rat).

Storage

After reconstitution, the NPY antibody can be stored for up to one month at 4°C. For long-term, aliquot and store at -20°C. Avoid repeated freezing and thawing.