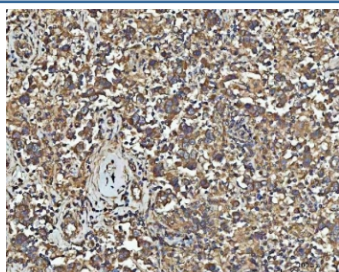


NPEPPS Antibody (RQ8367)

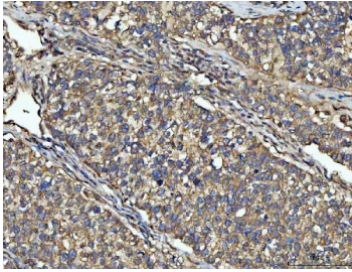
Catalog No.	Formulation	Size
RQ8367	0.5mg/ml if reconstituted with 0.2ml sterile DI water	100 ug

Bulk quote request

Availability	1-3 business days
Species Reactivity	Human, Mouse, Rat
Format	Antigen affinity purified
Clonality	Polyclonal (rabbit origin)
Isotype	Rabbit IgG
Purity	Antigen affinity purified
Buffer	Lyophilized from 1X PBS with 2% Trehalose
UniProt	P55786
Localization	Nuclear, cytoplasmic
Applications	Western Blot : 0.5-1ug/ml Immunohistochemistry (FFPE) : 2-5ug/ml Flow Cytometry : 1-3ug/million cells Direct ELISA : 0.1-0.5ug/ml
Limitations	This NPEPPS antibody is available for research use only.



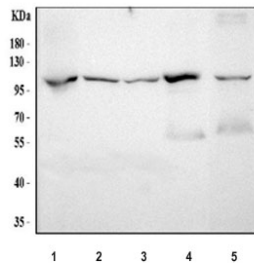
IHC staining of FFPE human testicular germ cell tumor tissue with NPEPPS antibody.
HIER: boil tissue sections in pH8 EDTA for 20 min and allow to cool before testing.



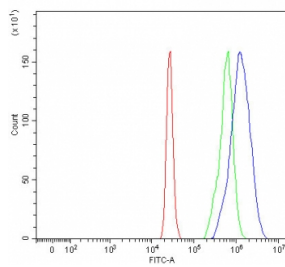
IHC staining of FFPE human non-small cell lung cancer tissue with NPEPPS antibody. HIER: boil tissue sections in pH8 EDTA for 20 min and allow to cool before testing.



IHC staining of FFPE human mouse brain tissue with NPEPPS antibody. HIER: boil tissue sections in pH8 EDTA for 20 min and allow to cool before testing.



Western blot testing of 1) human PC-3, 2) human A549, 3) human 293T, 4) rat brain and 5) mouse brain tissue lysate with NPEPPS antibody. Predicted molecular weight ~103 kDa.



Flow cytometry testing of fixed and permeabilized human 293T cells with NPEPPS antibody at 1ug/million cells (blocked with goat sera); Red=cells alone, Green=isotype control, Blue= NPEPPS antibody.

Description

Puromycin-sensitive amino peptidase also known as cytosol alanyl aminopeptidase or alanine aminopeptidase (AAP) is an enzyme that in humans is encoded by the NPEPPS gene. This gene encodes the puromycin-sensitive aminopeptidase, a zinc metallopeptidase which hydrolyzes amino acids from the N-terminus of its substrate. The protein has been localized to both the cytoplasm and to cellular membranes. This enzyme degrades enkaphalins in the brain, and studies in mouse suggest that it is involved in proteolytic events regulating the cell cycle.

Application Notes

Optimal dilution of the NPEPPS antibody should be determined by the researcher.

Immunogen

An E.coli-derived human recombinant protein (Y532-A896) was used as the immunogen for the NPEPPS antibody.

Storage

After reconstitution, the NPEPPS antibody can be stored for up to one month at 4oC. For long-term, aliquot and store at -20oC. Avoid repeated freezing and thawing.

