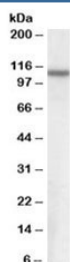


NPEPPS Antibody (R34608)

Catalog No.	Formulation	Size
R34608-100UG	0.5 mg/ml in 1X TBS, pH7.3, with 0.5% BSA (US sourced) and 0.02% sodium azide	100 ug

[Bulk quote request](#)

Availability	1-3 business days
Species Reactivity	Human
Predicted Reactivity	Mouse, Rat
Format	Antigen affinity purified
Clonality	Polyclonal (goat origin)
Isotype	Goat Ig
Purity	Antigen affinity
Gene ID	9520
Applications	Western Blot : 0.2-0.5ug/ml ELISA (peptide) LOD : 1:4000
Limitations	This NPEPPS antibody is available for research use only.



Western blot testing of human brain cerebral cortex lysate with NPEPPS antibody at 0.3ug/ml. Predicted molecular weight: ~100kDa.

Description

Additional name(s) for this target protein: Aminopeptidase puromycin sensitive, Metalloproteinase 100, MP100

Application Notes

Optimal dilution of the NPEPPS antibody should be determined by the researcher.

Immunogen

Amino acids KRDAESIHQYLLQQRK were used as the immunogen for this NPEPPS antibody.

Storage

Aliquot and store the NPEPPS antibody at -20oC.