

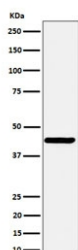
NODAL Antibody / Nodal homolog [clone 28N78] (RQ8599)

Catalog No.	Formulation	Size
RQ8599	Antibody in PBS with 0.02% sodium azide, 50% glycerol and 0.4-0.5mg/ml BSA	100 ug

Recombinant RABBIT MONOCLONAL

[Bulk quote request](#)

Availability	1-3 days
Species Reactivity	Human
Format	Purified
Clonality	Recombinant Rabbit Monoclonal
Isotype	Rabbit IgG
Clone Name	28N78
Purity	Affinity chromatography
UniProt	Q96S42
Applications	Western Blot : 1:500-1:2000
Limitations	This NODAL antibody is available for research use only.



Western blot testing of human SH-SY5Y cell lysate with NODAL antibody. Predicted molecular weight ~40 kDa.

Description

Essential for mesoderm formation and axial patterning during embryonic development. [UniProt]

Application Notes

Optimal dilution of the NODAL antibody should be determined by the researcher.

Immunogen

A synthetic peptide from human Nodal homolog protein was used as the immunogen for the NODAL antibody.

Storage

Store the NODAL antibody at -20oC.