

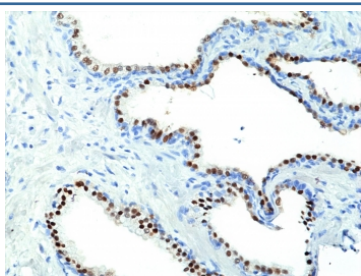
## NKX3.1 Antibody [clone RM430] (R20445)

Catalog No.	Formulation	Size
R20445-0.1ML	Antibody in PBS with 50% glycerol, 1% BSA and 0.09% sodium azide	100 ul

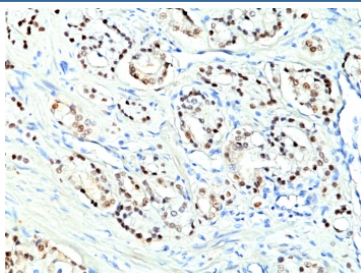
Recombinant **RABBIT MONOCLONAL**

**Bulk quote request**

Availability	1-3 business days
Species Reactivity	Human
Format	Purified
Clonality	Recombinant Rabbit Monoclonal
Isotype	Rabbit IgG
Clone Name	RM430
Purity	Protein A purified from animal origin-free supernatant
UniProt	Q99801
Localization	Nuclear
Applications	Immunohistochemistry (FFPE) : 1:100-1:200
Limitations	This recombinant NKX3.1 antibody is available for research use only.



IHC staining of FFPE human prostate tissue with recombinant NKX3.1 antibody at 1:200.



IHC staining of FFPE human prostate cancer tissue with recombinant NKX3.1 antibody at 1:200.

## Description

This antibody reacts to human NKX3.1 / Homeobox protein Nkx-3.1.

## Application Notes

The stated application concentrations are suggested starting points. Titration of the recombinant NKX3.1 antibody may be required due to differences in protocols and secondary/substrate sensitivity.

## Immunogen

A peptide corresponding to the N-terminus of human Nkx3.1 was used as the immunogen for the recombinant NKX3.1 antibody.

## Storage

Store the recombinant NKX3.1 antibody at -20oC.