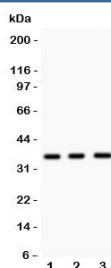


## NKX2.5 Antibody (R31706)

Catalog No.	Formulation	Size
R31706	0.5mg/ml if reconstituted with 0.2ml sterile DI water	100 ug

**Bulk quote request**

<b>Availability</b>	1-3 business days
<b>Species Reactivity</b>	Human, Mouse
<b>Format</b>	Antigen affinity purified
<b>Clonality</b>	Polyclonal (rabbit origin)
<b>Isotype</b>	Rabbit IgG
<b>Purity</b>	Antigen affinity
<b>Buffer</b>	Lyophilized from 1X PBS with 2.5% BSA and 0.025% sodium azide
<b>Gene ID</b>	1482
<b>Applications</b>	Western Blot : 0.5-1ug/ml
<b>Limitations</b>	This NKX2.5 antibody is available for research use only.



Western blot testing of NKX2.5 antibody and Lane 1: mouse spleen; 2: mouse heart; 3: human HeLa lysate. Predicted molecular weight ~35 kDa, routinely observed at 35~45kDa.

## Description

Homeobox protein Nkx-2.5, also known as NKX2E or CSX, is a protein that in humans is encoded by the NKX2-5 gene. It is mapped to 5q35.1. Homeobox-containing genes play critical roles in regulating tissue-specific gene expression essential for tissue differentiation, as well as determining the temporal and spatial patterns of development. Nkx2-5 and Tbx5 directly bound to the promoter of the gene encoding cardiac-specific natriuretic peptide precursor type A (NPPA) in tandem, and both transcription factors showed synergistic activation. Nkx2-5 is essential in cardiac development, and mutations in the protein cause various congenital heart malformations.

## Application Notes

The stated application concentrations are suggested starting amounts. Titration of the NKX2.5 antibody may be required due to differences in protocols and secondary/substrate sensitivity.

## Immunogen

An amino acid sequence from the middle region of human Homeobox protein Nkx-2.5 (AKDPRAEKKELCALQKAVELEKTEADNAER) was used as the immunogen for this NKX2.5 antibody.

## Storage

After reconstitution, the NKX2.5 antibody can be stored for up to one month at 4°C. For long-term, aliquot and store at -20°C. Avoid repeated freezing and thawing.