

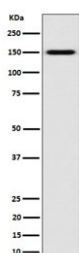
NKCC2 Antibody / Na-K-2Cl cotransporter 2 / SLC12A1 [clone 29S41] (RQ8683)

Catalog No.	Formulation	Size
RQ8683	Antibody in PBS with 0.02% sodium azide, 50% glycerol and 0.4-0.5mg/ml BSA	100 ul

Recombinant **RABBIT MONOCLONAL**

[Bulk quote request](#)

Availability	1-3 days
Species Reactivity	Human
Format	Purified
Clonality	Recombinant Rabbit Monoclonal
Isotype	Rabbit IgG
Clone Name	29S41
Purity	Affinity chromatography
UniProt	Q13621
Applications	Western Blot : 1:500-1:2000
Limitations	This NKCC2 antibody is available for research use only.



Western blot testing of human K562 cell lysate with NKCC2 antibody. Expected molecular weight: 121-160 kDa depending on glycosylation level. It can also be observed as an ~300 kDa complex with NKCC1.

Description

Renal sodium, potassium and chloride ion cotransporter that mediates the transepithelial NaCl reabsorption in the thick ascending limb and plays an essential role in the urinary concentration and volume regulation. [UniProt]

Application Notes

Optimal dilution of the NKCC2 antibody should be determined by the researcher.

Immunogen

A synthetic peptide specific to human SLC12A1/NKCC2 protein was used as the immunogen for the NKCC2 Antibody.

Storage

Store the NKCC2 antibody at -20oC.