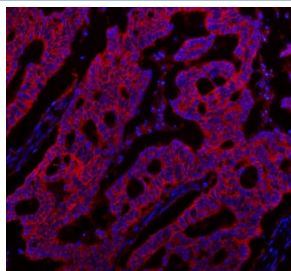


NKCC1 Antibody / SLC12A2 (R31290)

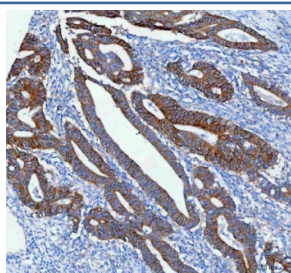
| Catalog No. | Formulation | Size |
|-------------|---|--------|
| R31290 | 0.5mg/ml if reconstituted with 0.2ml sterile DI water | 100 ug |

Bulk quote request

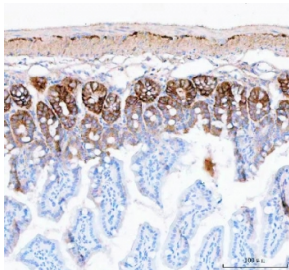
| | |
|---------------------------|--|
| Availability | 1-3 business days |
| Species Reactivity | Human, Mouse, Rat |
| Format | Antigen affinity purified |
| Clonality | Polyclonal (rabbit origin) |
| Isotype | Rabbit IgG |
| Purity | Antigen affinity |
| Buffer | Lyophilized from 1X PBS with 2% Trehalose |
| UniProt | P55011 |
| Applications | Western Blot : 0.5-1ug/ml Immunohistochemistry (FFPE) : 2-5ug/ml Immunofluorescence : 5ug/ml |
| Limitations | This NKCC1 antibody is available for research use only. |



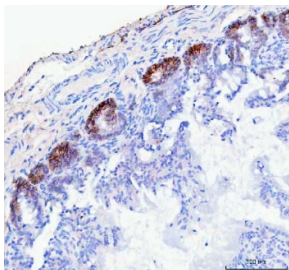
Immunofluorescent staining of FFPE human colon cancer tissue with NKCC1 antibody (red) and DAPI nuclear stain (blue). HIER: steam section in pH8 EDTA buffer for 20 min.



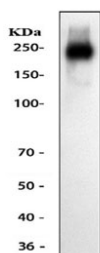
IHC staining of FFPE human colorectal adenocarcinoma tissue with NKCC1 antibody. HIER: boil tissue sections in pH8 EDTA for 20 min and allow to cool before testing.



IHC staining of FFPE mouse colon tissue with NKCC1 antibody. HIER: boil tissue sections in pH8 EDTA for 20 min and allow to cool before testing.



IHC staining of FFPE rat colon tissue with NKCC1 antibody. HIER: boil tissue sections in pH8 EDTA for 20 min and allow to cool before testing.



Western blot testing of NKCC1 antibody and human A549 cell lysate. Predicted molecular weight ~131 kDa but may be observed at higher molecular weights due to glycosylation.

Description

Solute carrier family 12 (sodium/potassium/chloride transporters), member 2, also known as NKCC1 (Na-K-Cl Cotransporter 1), is widely distributed throughout the body, especially in organs that secrete fluids, called exocrine glands. By fluorescence in situ hybridization, this gene is mapped to chromosome 5q23.3. The protein encoded by this gene mediates sodium and chloride transport and reabsorption. The encoded protein is a membrane protein and is important in maintaining proper ionic balance and cell volume. NKCC1 is phosphorylated in response to DNA damage. Three transcript variants encoding two different isoforms have been found for this gene.

Application Notes

The stated application concentrations are suggested starting amounts. Titration of the NKCC1 antibody may be required due to differences in protocols and secondary/substrate sensitivity.

Immunogen

An amino acid sequence from the N-terminus of human NKCC1 (RIDHYRHTAAQLGEKLLRP) was used as the immunogen for this NKCC1 antibody (100% homologous in human, mouse and rat).

Storage

After reconstitution, the NKCC1 antibody can be stored for up to one month at 4°C. For long-term, aliquot and store at -20°C. Avoid repeated freezing and thawing.

