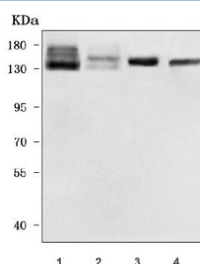


NHS-like protein 2 Antibody / NHSL2 (RQ8259)

| Catalog No. | Formulation | Size |
|-------------|-------------------------------------------------------|--------|
| RQ8259 | 0.5mg/ml if reconstituted with 0.2ml sterile DI water | 100 ug |

Bulk quote request

| | |
|---------------------------|----------------------------------------------------------------------|
| Availability | 1-3 business days |
| Species Reactivity | Human, Mouse, Rat |
| Format | Antigen affinity purified |
| Clonality | Polyclonal (rabbit origin) |
| Isotype | Rabbit IgG |
| Purity | Antigen affinity purified |
| Buffer | Lyophilized from 1X PBS with 2% Trehalose |
| UniProt | Q5HYW2 |
| Applications | Western Blot : 0.5-1ug/ml Direct ELISA : 0.1-0.5ug/ml |
| Limitations | This NHS-like protein 2 antibody is available for research use only. |



Western blot testing of 1) human SH-SY5Y, 2) human RT4, 3) rat brain and 4) mouse brain tissue lysate with NHS-like protein 2 antibody. Predicted molecular weight ~133 kDa.

Description

Predicted to enable calcium ion binding activity. Predicted to be involved in cell differentiation. Predicted to be active in cytoplasm.

Application Notes

Optimal dilution of the NHS-like protein 2 antibody should be determined by the researcher.

Immunogen

E. coli-derived recombinant human protein (amino acids Q596-D1042) was used as the immunogen for the NHS-like

protein 2 antibody.

Storage

After reconstitution, the NHS-like protein 2 antibody can be stored for up to one month at 4°C. For long-term, aliquot and store at -20°C. Avoid repeated freezing and thawing.