

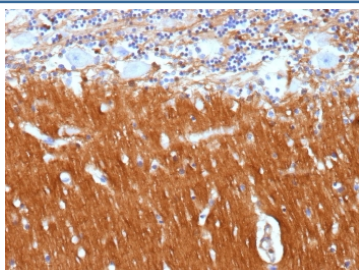
## Neural cell adhesion molecule L1 Antibody / NCAM-L1 [clone L1CAM/13053R] (V5759)

Catalog No.	Formulation	Size
V5759-100UG	0.2 mg/ml in 1X PBS with 0.1 mg/ml BSA (US sourced), 0.05% sodium azide	100 ug
V5759-20UG	0.2 mg/ml in 1X PBS with 0.1 mg/ml BSA (US sourced), 0.05% sodium azide	20 ug
V5759SAF-100UG	1 mg/ml in 1X PBS; BSA free, sodium azide free	100 ug

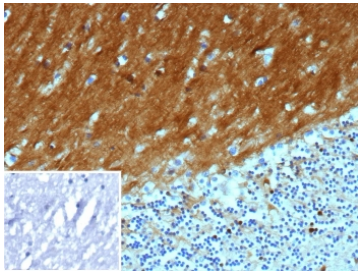
Recombinant **RABBIT MONOCLONAL**

[Bulk quote request](#)

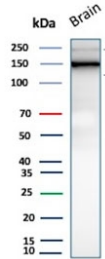
<b>Availability</b>	1-3 business days
<b>Species Reactivity</b>	Human
<b>Format</b>	Purified
<b>Clonality</b>	Recombinant Rabbit Monoclonal
<b>Isotype</b>	Rabbit IgG, kappa
<b>Clone Name</b>	L1CAM/13053R
<b>Purity</b>	Protein A affinity
<b>UniProt</b>	P32004
<b>Localization</b>	Cell surface, Cytoplasm
<b>Applications</b>	Immunohistochemistry (FFPE) : 1-2ug/ml Western Blot : 2-4ug/ml
<b>Limitations</b>	This Neural cell adhesion molecule L1 antibody is available for research use only.



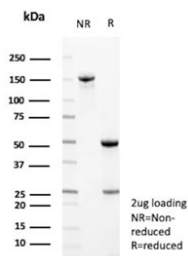
IHC staining of FFPE human brain tissue with Neural cell adhesion molecule L1 antibody (clone L1CAM/13053R). HIER: boil tissue sections in pH 9 10mM Tris with 1mM EDTA for 20 min and allow to cool before testing.



IHC staining of FFPE human brain tissue with Neural cell adhesion molecule L1 antibody (clone L1CAM/13053R). Inset: PBS used in place of primary Ab (secondary Ab negative control). HIER: boil tissue sections in pH 9 10mM Tris with 1mM EDTA for 20 min and allow to cool before testing.



Western blot testing of human brain tissue lysate with Neural cell adhesion molecule L1 antibody (clone L1CAM/13053R). Predicted molecular weight ~140 kDa but can be observed at up to ~240 kDa due to glycosylation.



SDS-PAGE analysis of purified, BSA-free Neural cell adhesion molecule L1 antibody (clone L1CAM/13053R) as confirmation of integrity and purity.

## Description

L1 (L1 cell adhesion molecule) also known as CAML1, CD171, and HSAS is an adhesion molecule which plays an important role in the nervous system development, including neuronal migration and differentiation. Mutations in the gene cause three X-linked neurological syndromes known by the acronym CRASH (corpus callosum hypoplasia, retardation, aphasia, spastic paraplegia and hydrocephalus). This mouse monoclonal antibody recognizes the sequence immediately NH2-terminal to the tyrosine-based motif and binds L1 only when Y1176 is dephosphorylated. Phosphorylation of either T1172 or Y1176 strongly inhibits binding of 74-5H7 to the L1 cytoplasmic domain.

## Application Notes

Optimal dilution of the Neural cell adhesion molecule L1 antibody should be determined by the researcher.

## Immunogen

A portion of amino acids 600-900 from human L1CAM protein was used as the immunogen for the Neural cell adhesion molecule L1 antibody.

## Storage

Aliquot the Neural cell adhesion molecule L1 antibody and store frozen at -20°C or colder. Avoid repeated freeze-thaw cycles.

