

## Nestin Antibody / NES (R32111)

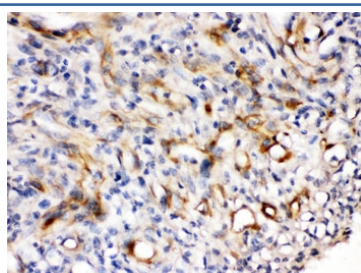
Catalog No.	Formulation	Size
R32111	0.5mg/ml if reconstituted with 0.2ml sterile DI water	100 ug

**Bulk quote request**

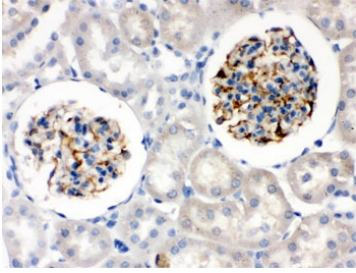
<b>Availability</b>	1-3 business days
<b>Species Reactivity</b>	Human, Mouse, Rat
<b>Format</b>	Antigen affinity purified
<b>Clonality</b>	Polyclonal (rabbit origin)
<b>Isotype</b>	Rabbit IgG
<b>Purity</b>	Antigen affinity
<b>Buffer</b>	Lyophilized from 1X PBS with 2.5% BSA, 0.025% sodium azide
<b>UniProt</b>	P48681
<b>Localization</b>	Cytoplasmic, membranous
<b>Applications</b>	Western Blot : 0.1-0.5ug/ml IHC (FFPE) : 0.5-1ug/ml IHC (Frozen) : 0.5-1ug/ml
<b>Limitations</b>	This Nestin antibody is available for research use only.



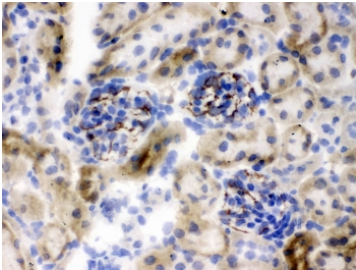
Western blot testing of human 1) HeLa and 2) HepG2 cell lysate with Nestin antibody. Predicted molecular weight ~177 kDa but can be observed at up to 280 kDa.



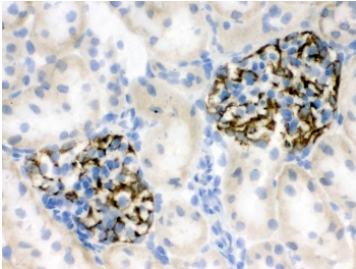
IHC testing of FFPE human melanoma tissue with Nestin antibody. HIER: Boil the paraffin sections in pH 6, 10mM citrate buffer for 20 minutes and allow to cool prior to staining.



IHC testing of FFPE rat kidney with Nestin antibody. HIER: Boil the paraffin sections in pH 6, 10mM citrate buffer for 20 minutes and allow to cool prior to staining.



IHC testing of frozen mouse kidney tissue with Nestin antibody.



IHC testing of frozen rat kidney tissue with Nestin antibody.

## Description

Nestin is a type VI intermediate filament (IF) protein that in humans is encoded by the NES gene. Distribution and expression of nestin in mitotically active cells suggests it plays a role in regulation of the assembly and disassembly of intermediate filaments, which, together with other structural proteins, participate in remodeling of the cell. The role of nestin in dynamic cells, particularly structural organization of the cell, appears strictly regulated by phosphorylation, especially its integration into heterogeneous intermediate filaments together with vimentin or  $\alpha$ -internexin. Furthermore, nestin expression has been extensively used as a marker for central nervous system (CNS) progenitor cells in different contexts, based on observations indicating a correlation between nestin expression and this cell type in vivo.

## Application Notes

Optimal dilution of the Nestin antibody should be determined by the researcher.

## Immunogen

Amino acids ERLRATEKFQLAVEALEQEKKQLQSQIAQVLEGRQQLAH of human NES were used as the immunogen for the Nestin antibody.

## Storage

After reconstitution, the Nestin antibody can be stored for up to one month at 4°C. For long-term, aliquot and store at -20°C. Avoid repeated freezing and thawing.

