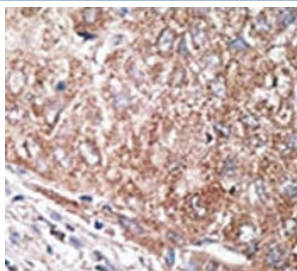


## Nestin Antibody (F53752)

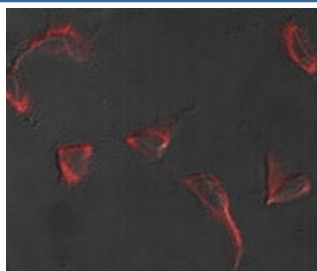
| Catalog No.   | Formulation                                | Size    |
|---------------|--|---------|
| F53752-0.4ML  | In 1X PBS, pH 7.4, with 0.09% sodium azide | 0.4 ml  |
| F53752-0.08ML | In 1X PBS, pH 7.4, with 0.09% sodium azide | 0.08 ml |

[Bulk quote request](#)

|                           |   |
|---------------------------|---|
| <b>Availability</b>       | 1-3 business days   |
| <b>Species Reactivity</b> | Human, Mouse  |
| <b>Format</b>             | Purified  |
| <b>Clonality</b>          | Polyclonal (rabbit origin)                                    |
| <b>Isotype</b>            | Rabbit Ig   |
| <b>Purity</b>             | Purified  |
| <b>UniProt</b>            | P48681  |
| <b>Localization</b>       | Cytoplasmic, membranous                                       |
| <b>Applications</b>       | IHC (Paraffin) : 1:50-1:100<br>Immunofluorescence : 1:10-1:50 |
| <b>Limitations</b>        | This Nestin antibody is available for research use only.      |



IHC analysis of FFPE human hepatocarcinoma tissue stained with the Nestin antibody.



Immunofluorescence analysis of Nestin antibody and HeLa cells. Primary antibody was followed by Alexa-Fluor-546-conjugated donkey anti-rabbit IgG (H+L). Alexa-Fluor-546 emits orange fluorescence.

## Description

Nestin is a class VI intermediate filament protein expressed predominantly in stem cells of the neural tube but absent from virtually all differentiated CNS cells. In the CNS, nestin is downregulated upon differentiation and replaced by neurofilaments. Transient expression of nestin has been postulated as a key step committing cells to the neural differentiation pathway. Nestin expression has also been observed in pancreatic hematopoietic stem cell populations.

## Application Notes

Titration of the Nestin antibody may be required due to differences in protocols and secondary/substrate sensitivity.

## Immunogen

A portion of amino acids 1560-1590 from the human protein was used as the immunogen for this Nestin antibody.

## Storage

Aliquot the Nestin antibody and store frozen at -20oC or colder. Avoid repeated freeze-thaw cycles.