

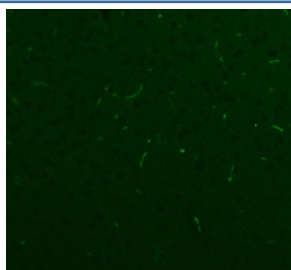
## NES Antibody / Nestin [clone FBH-14] (RQ8919)

Catalog No.	Formulation	Size
RQ8919	Antibody in PBS with 0.02% sodium azide, 50% glycerol and 0.4-0.5mg/ml BSA	100 ul

Recombinant **RABBIT MONOCLONAL**

[Bulk quote request](#)

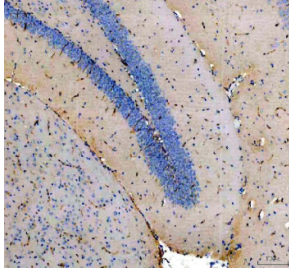
Availability	1-3 days
Species Reactivity	Human, Mouse, Rat, Pig
Format	Purified
Clonality	Recombinant Rabbit Monoclonal
Isotype	Rabbit IgG
Clone Name	FBH-14
Purity	Affinity chromatography
UniProt	P48681
Localization	Cytoplasm, membrane
Applications	Immunohistochemistry (FFPE) : 1:50 Western Blot : 1:500 Immunofluorescence : 1:50
Limitations	This NES antibody is available for research use only.



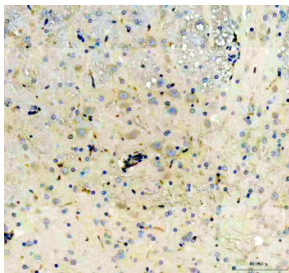
Immunofluorescent staining of FFPE rat brain tissue with NES antibody. HIER: steam section in pH8 EDTA buffer for 20 min.



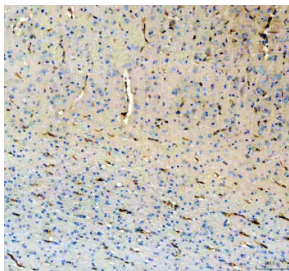
IHC staining of FFPE human glioma tissue with NES antibody, HRP-secondary and DAB substrate. HIER: boil tissue sections in pH8 EDTA for 20 min and allow to cool before testing.



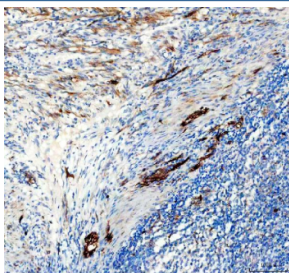
IHC staining of FFPE mouse brain tissue with NES antibody, HRP-secondary and DAB substrate. HIER: boil tissue sections in pH8 EDTA for 20 min and allow to cool before testing.



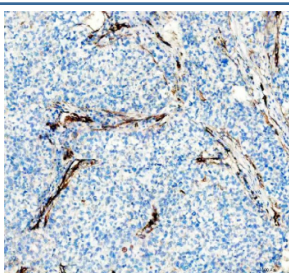
IHC staining of FFPE rat brain tissue with NES antibody, HRP-secondary and DAB substrate. HIER: boil tissue sections in pH8 EDTA for 20 min and allow to cool before testing.



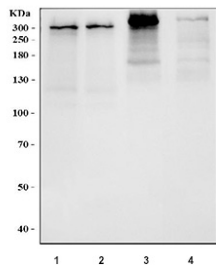
IHC staining of FFPE pig brain tissue with NES antibody, HRP-secondary and DAB substrate. HIER: boil tissue sections in pH8 EDTA for 20 min and allow to cool before testing.



IHC staining of FFPE human diffuse large B-cell lymphoma of the intestine tissue with NES antibody, HRP-secondary and DAB substrate. HIER: boil tissue sections in pH8 EDTA for 20 min and allow to cool before testing.



IHC staining of FFPE human non-small cell lung cancer tissue with NES antibody, HRP-secondary and DAB substrate. HIER: boil tissue sections in pH8 EDTA for 20 min and allow to cool before testing.



Western blot testing of 1) human U-251, 2) human SH-SY5Y, 3) rat C6 and 4) mouse Neuro-2a cell lysate with NES antibody. Predicted molecular weight ~177 kDa but can be observed at up to 280 kDa.