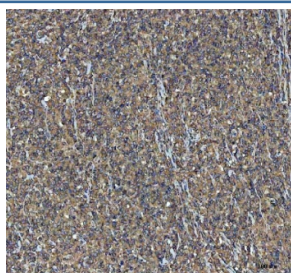


NEEP21 Antibody / Neuron-enriched endosomal protein of 21 kDa / NSG1 (RQ8428)

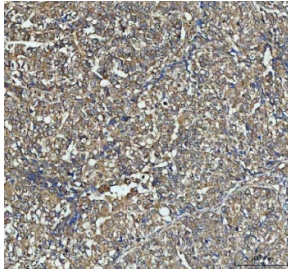
Catalog No.	Formulation	Size
RQ8428	0.5mg/ml if reconstituted with 0.2ml sterile DI water	100 ug

[Bulk quote request](#)

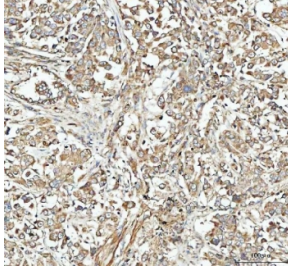
Availability	1-3 business days
Species Reactivity	Human, Mouse, Rat
Format	Antigen affinity purified
Clonality	Polyclonal (rabbit origin)
Isotype	Rabbit IgG
Purity	Antigen affinity purified
Buffer	Lyophilized from 1X PBS with 2% Trehalose
UniProt	P42857
Localization	Cytoplasm
Applications	Western Blot : 0.5-1ug/ml Immunohistochemistry (FFPE) : 2-5ug/ml Flow Cytometry : 1-3ug/million cells ELISA : 0.1-0.5ug/ml
Limitations	This NEEP21 antibody is available for research use only.



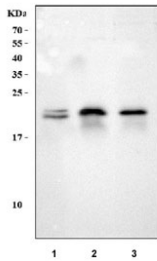
IHC staining of FFPE human large B-cell lymphoma tissue with NEEP21 antibody. HIER: boil tissue sections in pH8 EDTA for 20 min and allow to cool before testing.



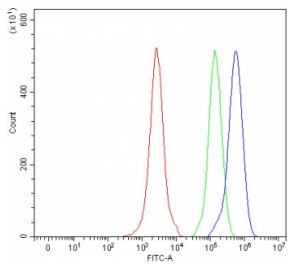
IHC staining of FFPE human bladder urothelial carcinoma tissue with NEEP21 antibody. HIER: boil tissue sections in pH8 EDTA for 20 min and allow to cool before testing.



IHC staining of FFPE human lung cancer tissue with NEEP21 antibody. HIER: boil tissue sections in pH8 EDTA for 20 min and allow to cool before testing.



Western blot testing of 1) human SH-SY5Y, 2) rat brain and 3) mouse brain tissue lysate with NEEP21 antibody. Predicted molecular weight ~21 kDa.



Flow cytometry testing of fixed and permeabilized human JK cells with NEEP21 antibody at 1ug/million cells (blocked with goat sera); Red=cells alone, Green=isotype control, Blue= NEEP21 antibody.

Description

NSG1, also known as Neuron-specific protein family member 1 and Neuron-enriched endosomal protein of 21 kDa (NEEP21), contains an N-terminal nuclear localization motif and a central hydrophobic segment. It localizes to the nucleus in mitotic neuronal cell cultures and to the cytoplasm in postmitotic neurons. Mouse and human NEEP21/NSG1 share 97% sequence identity and they differs from each other by only 5 amino acid residues. The protein is expressed in all regions of rat brain. In hamster, it was preferentially expressed in adult brain.

Application Notes

Optimal dilution of the NEEP21 antibody should be determined by the researcher.

Immunogen

An E.coli-derived human recombinant protein (M1-Q176) was used as the immunogen for the NEEP21 antibody.

Storage

After reconstitution, the NEEP21 antibody can be stored for up to one month at 4oC. For long-term, aliquot and store at -20oC. Avoid repeated freezing and thawing.

