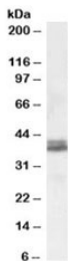


## NDEL1 Antibody (R33327)

| Catalog No.  | Formulation                                                                   | Size   |
|--------------|-------------------------------------------------------------------------------|--------|
| R33327-100UG | 0.5 mg/ml in 1X TBS, pH7.3, with 0.5% BSA (US sourced) and 0.02% sodium azide | 100 ug |

[Bulk quote request](#)

|                             |                                                             |
|-----------------------------|-------------------------------------------------------------|
| <b>Availability</b>         | 1-3 business days                                           |
| <b>Species Reactivity</b>   | Human                                                       |
| <b>Predicted Reactivity</b> | Cow, Dog, Mouse, Pig, Rat                                   |
| <b>Format</b>               | Antigen affinity purified                                   |
| <b>Clonality</b>            | Polyclonal (goat origin)                                    |
| <b>Isotype</b>              | Goat Ig                                                     |
| <b>Purity</b>               | Antigen affinity                                            |
| <b>UniProt</b>              | Q9GZM8                                                      |
| <b>Gene ID</b>              | 81565                                                       |
| <b>Applications</b>         | Western Blot : 0.1-0.3ug/ml<br>ELISA (peptide) LOD : 1:8000 |
| <b>Limitations</b>          | This NDEL1 antibody is available for research use only.     |



Western blot testing of human cerebellum lysate with NDEL1 antibody at 0.1ug/ml.  
Predicted molecular weight: ~38/41/37kDa (isoforms 1/2/3).

### Description

Additional name(s) for this target protein: NudE nuclear distribution gene E homolog (A. nidulans)-like 1

### Application Notes

Optimal dilution of the NDEL1 antibody should be determined by the researcher.

## **Immunogen**

Amino acids CRNFAKDQASRKS<sub>Y</sub> were used as the immunogen for this NDEL1 antibody. This sequence is common to isoforms 1/2/3 of UniProt no. Q9GZM8.

## **Storage**

Aliquot and store the NDEL1 antibody at -20oC.