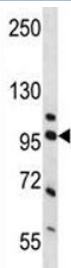


NCL Antibody (F44030)

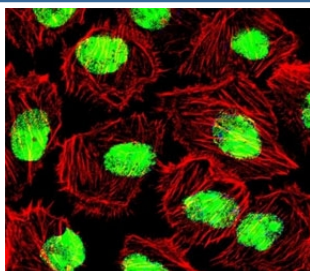
Catalog No.	Formulation	Size
F44030-0.4ML	In 1X PBS, pH 7.4, with 0.09% sodium azide	0.4 ml
F44030-0.08ML	In 1X PBS, pH 7.4, with 0.09% sodium azide	0.08 ml

[Bulk quote request](#)

Availability	1-3 business days
Species Reactivity	Human
Predicted Reactivity	Primate
Format	Antigen affinity purified
Clonality	Polyclonal (rabbit origin)
Isotype	Rabbit Ig
Purity	Antigen affinity
UniProt	P19338
Applications	Western Blot : 1:1000 Immunofluorescence : 1:10-1:50
Limitations	This NCL antibody is available for research use only.



Western blot analysis of NCL and human placenta tissue lysate. Predicted molecular weight is 77 kDa, observed size is 100~110 kDa.



Fluorescent confocal image of U251 cell stained with NCL antibody at 1:25. NCL immunoreactivity is localized to the nucleus.

Description

Nucleolin (NCL), a eukaryotic nucleolar phosphoprotein, is involved in the synthesis and maturation of ribosomes. [Wiki]

Application Notes

Titration of the NCL antibody may be required due to differences in protocols and secondary/substrate sensitivity.

Immunogen

A portion of amino acids 276-304 from the human protein was used as the immunogen for this NCL antibody.

Storage

Aliquot the NCL antibody and store frozen at -20oC or colder. Avoid repeated freeze-thaw cycles.