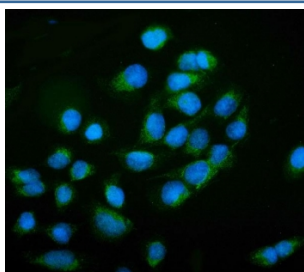


NCAM1 Antibody / CD56 (RQ6330)

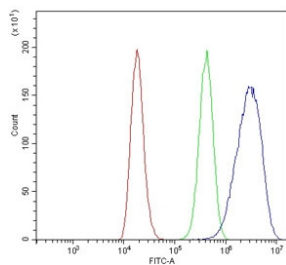
| Catalog No. | Formulation | Size |
|-------------|---|--------|
| RQ6330 | 0.5mg/ml if reconstituted with 0.2ml sterile DI water | 100 ug |

Bulk quote request

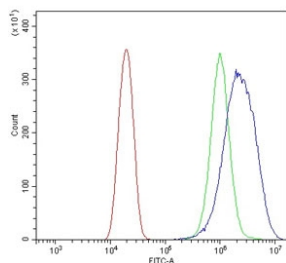
| | |
|---------------------------|--|
| Availability | 1-3 business days |
| Species Reactivity | Human, Mouse, Rat |
| Format | Purified |
| Clonality | Polyclonal (rabbit origin) |
| Isotype | Rabbit IgG |
| Purity | Antigen affinity purified |
| Buffer | Lyophilized from 1X PBS with 2% Trehalose |
| UniProt | P13591 |
| Localization | Cell surface, cytoplasmic |
| Applications | Western Blot : 0.5-1ug/ml Immunofluorescence (FFPE) : 5ug/ml Flow Cytometry : 1-3ug/million cells Direct ELISA : 0.1-0.5ug/ml |
| Limitations | This NCAM1 antibody is available for research use only. |



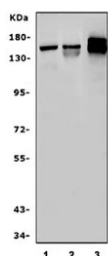
Immunofluorescent staining of FFPE human U-2 OS cells with NCAM1 antibody (green) and DAPI nuclear stain (blue). HIER: steam section in pH6 citrate buffer for 20 min.



Flow cytometry testing of human 293T cells with NCAM1 antibody at 1ug/million cells (blocked with goat sera); Red=cells alone, Green=isotype control, Blue= NCAM1 antibody.



Flow cytometry testing of human U-2 OS cells with NCAM1 antibody at 1ug/million cells (blocked with goat sera); Red=cells alone, Green=isotype control, Blue= NCAM1 antibody.



Western blot testing of 1) rat brain, 2) mouse brain and 3) mouse Neuro-2a lysate with NCAM1 antibody. Predicted molecular weight: ~110 kDa (soluble fragment), ~120/125 kDa (GPI-anchored), 140/180 kDa (transmembrane isoforms).

Description

NCAM is a membrane-bound glycoprotein that plays a role in cell-cell and cell-matrix adhesion through both its homophilic and heterophilic binding activity. The neural cell adhesion molecule appears on early embryonic cells and is important in the formation of cell collectives and their boundaries at sites of morphogenesis. Later in development it is found on various differentiated tissues and is a major CAM mediating adhesion among neurons and between neurons and muscle. NCAM gene is mapped to 11q23. The neural cell adhesion molecule (NCAM) can influence a number of diverse intercellular events, including junctional communication, the association of axons with pathways and targets, and signals that alter levels of neurotransmitter enzymes.

Application Notes

Optimal dilution of the NCAM1 antibody should be determined by the researcher.

Immunogen

Recombinant human protein (amino acids T80-T328) was used as the immunogen for the NCAM1 antibody.

Storage

After reconstitution, the NCAM1 antibody can be stored for up to one month at 4oC. For long-term, aliquot and store at -20oC. Avoid repeated freezing and thawing.

