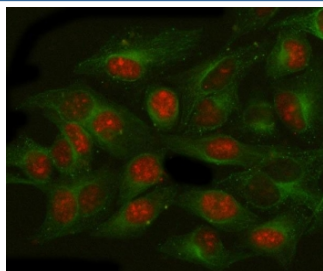


## NAT10 Antibody / ALP (RQ8333)

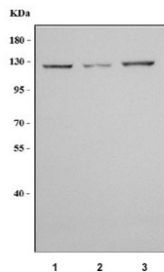
Catalog No.	Formulation	Size
RQ8333	0.5mg/ml if reconstituted with 0.2ml sterile DI water	100 ug

**Bulk quote request**

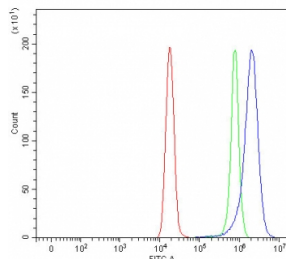
<b>Availability</b>	1-2 business days
<b>Species Reactivity</b>	Human
<b>Format</b>	Antigen affinity purified
<b>Clonality</b>	Polyclonal (rabbit origin)
<b>Isotype</b>	Rabbit IgG
<b>Purity</b>	Antigen affinity purified
<b>Buffer</b>	Lyophilized from 1X PBS with 2% Trehalose
<b>UniProt</b>	Q9H0A0
<b>Localization</b>	Nuclear
<b>Applications</b>	Western Blot : 0.5-1ug/ml Immunofluorescence : 5ug/ml Flow Cytometry : 1-3ug/million cells Immunoprecipitation : 2ug/500ug of lysate Direct ELISA : 0.1-0.5ug/ml
<b>Limitations</b>	This NAT10 antibody is available for research use only.



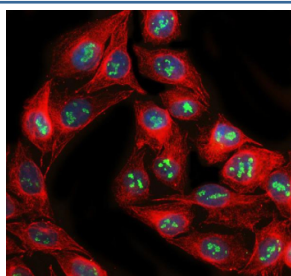
Immunofluorescent staining of FFPE human HeLa cells with NAT10 antibody (red) and Beta Tubulin mAb (green). HIER: steam section in pH6 citrate buffer for 20 min.



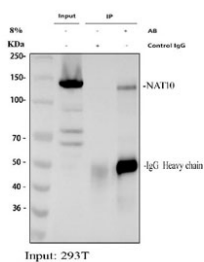
Western blot testing of human 1) A549, 2) HeLa and 3) K562 cell lysate with NAT10 antibody. Predicted molecular weight ~116 kDa.



Flow cytometry testing of fixed and permeabilized human HeLa cells with NAT10 antibody at 1ug/million cells (blocked with goat sera); Red=cells alone, Green=isotype control, Blue= NAT10 antibody.



Immunofluorescent staining of FFPE human HeLa cells with NAT10 antibody (green) and Alpha Tubulin mAb (red) and DAPI nuclear stain (blue). HIER: steam section in pH6 citrate buffer for 20 min.



Immunoprecipitation of NAT10 protein from 500ug of human 293T whole cell lysate with 2ug of NAT10 antibody.

## Description

N-acetyltransferase 10 is an enzyme that in humans is encoded by the NAT10 gene. The protein encoded by this gene is an RNA cytidine acetyltransferase involved in histone acetylation, tRNA acetylation, the biosynthesis of 18S rRNA, and the enhancement of nuclear architecture and chromatin organization.

## Application Notes

Optimal dilution of the NAT10 antibody should be determined by the researcher.

## Immunogen

An E.coli-derived human recombinant protein (Q22-L740) was used as the immunogen for the NAT10 antibody.

## Storage

After reconstitution, the NAT10 antibody can be stored for up to one month at 4oC. For long-term, aliquot and store at -20oC. Avoid repeated freezing and thawing.

