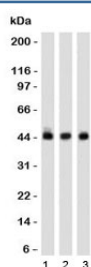


## Napsin A Antibody [clone NPSNA-1] (V7177)

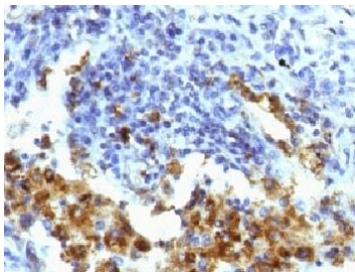
Catalog No.	Formulation	Size
V7177-100UG	0.2 mg/ml in 1X PBS with 0.1 mg/ml BSA (US sourced) and 0.05% sodium azide	100 ug
V7177-20UG	0.2 mg/ml in 1X PBS with 0.1 mg/ml BSA (US sourced) and 0.05% sodium azide	20 ug
V7177SAF-100UG	1 mg/ml in 1X PBS; BSA free, sodium azide free	100 ug
V7177IHC-7ML	Prediluted in 1X PBS with 0.1 mg/ml BSA (US sourced) and 0.05% sodium azide; *For IHC use only*	7 ml

[Bulk quote request](#)

<b>Availability</b>	1-3 business days
<b>Species Reactivity</b>	Human
<b>Format</b>	Purified
<b>Clonality</b>	Monoclonal (mouse origin)
<b>Isotype</b>	Mouse IgG1, kappa
<b>Clone Name</b>	NPSNA-1
<b>Purity</b>	Protein G affinity chromatography
<b>UniProt</b>	O96009
<b>Localization</b>	Cytoplasmic
<b>Applications</b>	Western Blot : 1-2ug/ml Immunohistochemistry (FFPE) : 1-2ug/ml for 30 min at RT Prediluted IHC Only Format : incubate for 30 min at RT (1)
<b>Limitations</b>	This Napsin A antibody is available for research use only.



Western blot of 1) K562, 2) 293 and 3) A549 cell lysates using Napsin A antibody (clone NPSNA-1). Expected molecular weight: 38-45 kDa depending on glycosylation level.



IHC testing of FFPE human lung adenocarcinoma with Napsin A antibody (clone NPSNA-1). FFPE testing requires sections to be boiled in pH 9 10mM Tris with 1mM EDTA for 10-20 minutes, followed by cooling at RT for 20 minutes, prior to staining.

## Description

Napsin-A is a protein that in humans is encoded by the NAPS A gene. The activation peptides of aspartic proteinases plays role as inhibitors of the active site. These peptide segments, or pro-parts, are deemed important for correct folding, targeting, and control of the activation of aspartic proteinase zymogens. The pro-Napsin A gene is expressed predominantly in lung and kidney. Its translation product is predicted to be a fully functional, glycosylated aspartic proteinase precursor containing an RGD motif and an additional 18 residues at its C-terminus. [Wiki]

## Application Notes

Titration of the Napsin A antibody may be required for optimal performance.

1. The prediluted format is supplied in a dropper bottle and is optimized for use in IHC. After epitope retrieval step (if required), drip mAb solution onto the tissue section and incubate at RT for 30 min.

## Immunogen

Amino acids 189-299 from the human protein were used as the immunogen for the Napsin A antibody.

## Storage

Store the Napsin A antibody at 2-8°C (with azide) or aliquot and store at -20°C or colder (without azide).