

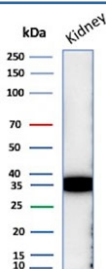
Napsin A Antibody [clone NAPSA/7165R] (V4647)

| Catalog No. | Formulation | Size |
|----------------|---|--------|
| V4647-100UG | 0.2 mg/ml in 1X PBS with 0.1 mg/ml BSA (US sourced), 0.05% sodium azide | 100 ug |
| V4647-20UG | 0.2 mg/ml in 1X PBS with 0.1 mg/ml BSA (US sourced), 0.05% sodium azide | 20 ug |
| V4647SAF-100UG | 1 mg/ml in 1X PBS; BSA free, sodium azide free | 100 ug |

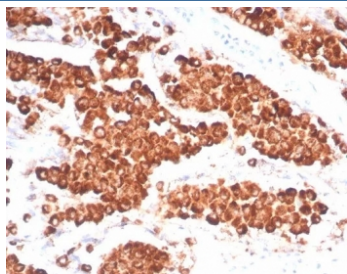
Recombinant **RABBIT MONOCLONAL**

[Bulk quote request](#)

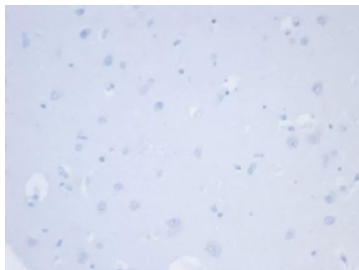
| | |
|---------------------------|--|
| Availability | 1-3 business days |
| Species Reactivity | Human |
| Format | Purified |
| Clonality | Recombinant Rabbit Monoclonal |
| Isotype | Rabbit IgG, kappa |
| Clone Name | NAPSA/7165R |
| Purity | Protein A affinity |
| UniProt | O96009 |
| Localization | Cytoplasm |
| Applications | Western Blot : 2-4ug/ml Immunohistochemistry (FFPE) : 1-2ug/ml for 30 min at RT |
| Limitations | This Napsin A antibody is available for research use only. |



Western blot testing of human kidney tissue lysate with Napsin A antibody. Expected molecular weight: 38-45 kDa.



IHC staining of FFPE human lung adenocarcinoma tissue with NAPSA antibody (clone NAPSA/7165R) at 2ug/ml. HIER: boil tissue sections in pH 9 10mM Tris with 1mM EDTA for 20 min and allow to cool before testing.



Negative control: IHC testing of FFPE human brain tissue with NAPSA antibody (clone NAPSA/7165R) at 2ug/ml. HIER: boil tissue sections in pH 9 10mM Tris with 1mM EDTA for 20 min and allow to cool before testing.

Description

Napsin is a pepsin-like aspartic proteinase connected with maturation of surfactant protein B. There are two closely related napsins, napsin A and napsin B. Napsin A is expressed as a single chain protein. Immunohistochemical studies revealed high expression levels of napsin A in human lung and kidney but low expression in spleen. Napsin A is expressed in type II pneumocytes and in adenocarcinomas of lung. The high specificity expression of napsin A in adenocarcinomas of lung is useful to distinguish primary lung adenocarcinomas from adenocarcinomas of other organs.

Application Notes

Optimal dilution of the Napsin A antibody should be determined by the researcher.

Immunogen

A recombinant partial protein sequence (within amino acids 50-150) from the human protein was used as the immunogen for the Napsin A antibody.

Storage

Aliquot the Napsin A antibody and store frozen at -20°C or colder. Avoid repeated freeze-thaw cycles.