

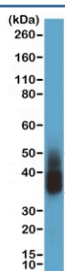
## Napsin-A Antibody / NAPSA [clone RM366] (R20385)

Catalog No.	Formulation	Size
R20385-0.1ML	Antibody in PBS with 50% glycerol, 1% BSA and 0.09% sodium azide	100 ul

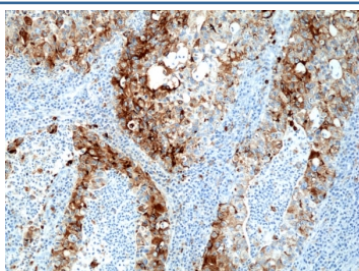
Recombinant **RABBIT MONOCLONAL**

[Bulk quote request](#)

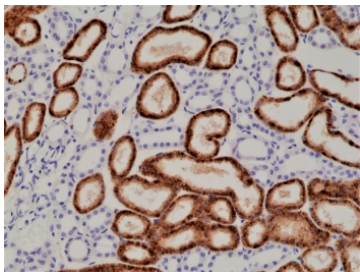
Availability	1-3 business days
Species Reactivity	Human
Format	Purified
Clonality	Recombinant Rabbit Monoclonal
Isotype	Rabbit IgG
Clone Name	RM366
Purity	Protein A purified from animal origin-free supernatant
UniProt	O96009
Applications	Immunohistochemistry (FFPE) : 1:500-1:1000 Western Blot : 1:1000-1:2000
Limitations	This recombinant Napsin-A antibody is available for research use only.



Western blot testing of human lung tissue with recombinant Napsin-A antibody at 1:2000 dilution. Expected molecular weight: 38-45 kDa depending on glycosylation level.



IHC staining of FFPE human lung adenocarcinoma tissue with recombinant Napsin-A antibody at 1:2000.



IHC staining of FFPE human kidney tissue with recombinant Napsin-A antibody at 1:1000.

## Description

This antibody reacts human Napsin-A.

## Application Notes

The stated application concentrations are suggested starting points. Titration of the recombinant Napsin-A antibody may be required due to differences in protocols and secondary/substrate sensitivity.

## Immunogen

A peptide corresponding to the N-terminus of human Napsin-A was used as the immunogen for the recombinant Napsin-A antibody.

## Storage

Store the recombinant Napsin-A antibody at -20oC.