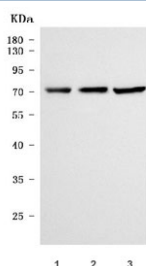


## NaDC-1 Antibody / SLC13A2 (RQ7695)

| Catalog No. | Formulation   | Size   |
|-------------|---|--------|
| RQ7695      | 0.5mg/ml if reconstituted with 0.2ml sterile DI water | 100 ug |

**Bulk quote request**

|                           |  |
|---------------------------|--|
| <b>Availability</b>       | 1-3 business days  |
| <b>Species Reactivity</b> | Human, Rat   |
| <b>Format</b>             | Antigen affinity purified                                |
| <b>Clonality</b>          | Polyclonal (rabbit origin)                               |
| <b>Isotype</b>            | Rabbit IgG   |
| <b>Purity</b>             | Antigen affinity purified                                |
| <b>Buffer</b>             | Lyophilized from 1X PBS with 2% Trehalose                |
| <b>UniProt</b>            | Q13183   |
| <b>Applications</b>       | Western Blot : 0.5-1ug/ml<br>Direct ELISA : 0.1-0.5ug/ml |
| <b>Limitations</b>        | This NaDC-1 antibody is available for research use only. |



Western blot testing of 1) human Caco-2, 2) rat kidney and 3) rat PC-12 cell lysate with NaDC-1 antibody. Predicted molecular weight: 64-70 kDa (three isoforms).

## Description

Solute carrier family 13 member 2, also called Na(+)/dicarboxylate cotransporter 1 (NaDC-1), is a protein that is encoded in humans by the SLC13A2 gene. The protein encoded by this gene is a sodium-coupled citrate transporter that is regulated by the chaperone activity of cyclophilin b. The encoded protein may play a role in the formation of kidney stones.

## Application Notes

Optimal dilution of the NaDC-1 antibody should be determined by the researcher.

## Immunogen

E. coli-derived recombinant human protein (amino acids A152-M417) was used as the immunogen for the NaDC-1 antibody.

## Storage

After reconstitution, the NaDC-1 antibody can be stored for up to one month at 4°C. For long-term, aliquot and store at -20°C. Avoid repeated freezing and thawing.