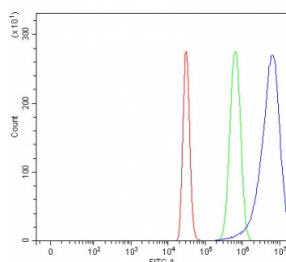


## NAA16 Antibody / NARG1L (RQ8071)

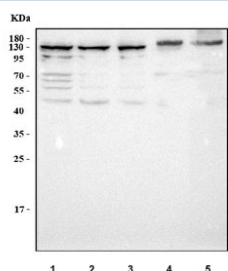
Catalog No.	Formulation	Size
RQ8071	0.5mg/ml if reconstituted with 0.2ml sterile DI water	100 ug

**Bulk quote request**

<b>Availability</b>	1-3 business days
<b>Species Reactivity</b>	Human, Mouse, Rat
<b>Format</b>	Antigen affinity purified
<b>Clonality</b>	Polyclonal (rabbit origin)
<b>Isotype</b>	Rabbit IgG
<b>Purity</b>	Antigen affinity purified
<b>Buffer</b>	Lyophilized from 1X PBS with 2% Trehalose
<b>UniProt</b>	Q6N069
<b>Applications</b>	Western Blot : 0.5-1ug/ml Flow Cytometry : 1-3ug/million cells Direct ELISA : 0.1-0.5ug/ml
<b>Limitations</b>	This NAA16 antibody is available for research use only.



Flow cytometry testing of fixed and permeabilized human HepG2 cells with NAA16 antibody at 1ug/million cells (blocked with goat sera); Red=cells alone, Green=isotype control, Blue= NAA16 antibody.



Western blot testing of 1) human 293T, 2) human HEL, 3) human SH-SY5Y, 4) rat liver and 5) mouse liver tissue lysate with NAA16 antibody. Predicted molecular weight ~101 kDa with multiple smaller isoforms.

## Description

Enables ribosome binding activity. Involved in N-terminal protein amino acid acetylation; negative regulation of apoptotic process; and protein stabilization. Located in cytosol. Part of NatA complex.

## Application Notes

Optimal dilution of the NAA16 antibody should be determined by the researcher.

## Immunogen

E. coli-derived recombinant human protein (amino acids E232-E863) was used as the immunogen for the NAA16 antibody.

## Storage

After reconstitution, the NAA16 antibody can be stored for up to one month at 4°C. For long-term, aliquot and store at -20°C. Avoid repeated freezing and thawing.