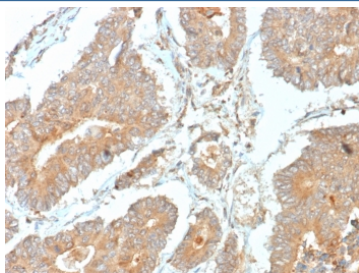


N-terminal EF-hand calcium binding protein 1 Antibody / NECAB1 [clone NECAB1/7676] (V5253)

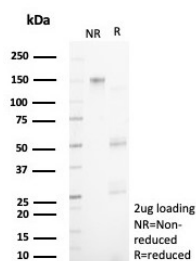
Catalog No.	Formulation	Size
V5253-100UG	0.2 mg/ml in 1X PBS with 0.1 mg/ml BSA (US sourced), 0.05% sodium azide	100 ug
V5253-20UG	0.2 mg/ml in 1X PBS with 0.1 mg/ml BSA (US sourced), 0.05% sodium azide	20 ug
V5253SAF-100UG	1 mg/ml in 1X PBS; BSA free, sodium azide free	100 ug

Bulk quote request

Availability	1-3 business days
Species Reactivity	Human
Format	Purified
Clonality	Monoclonal (mouse origin)
Isotype	Mouse IgG
Clone Name	NECAB1/7676
Purity	Protein A/G affinity
UniProt	Q8N987
Localization	Nuclear, cytoplasmic
Applications	Immunohistochemistry (FFPE) : 1-2ug/ml for 30 min at RT
Limitations	This N-terminal EF-hand calcium binding protein 1 antibody is available for research use only.



IHC staining of FFPE human prostate tissue with N-terminal EF-hand calcium binding protein 1 antibody (clone NECAB1/7676). HIER: boil tissue sections in pH 9 10mM Tris with 1mM EDTA for 20 min and allow to cool before testing.



SDS-PAGE analysis of purified, BSA-free N-terminal EF-hand calcium binding protein 1 antibody (clone NECAB1/7676) as confirmation of integrity and purity.

Description

Members of the EF-CBP (N-terminal EF-hand calcium binding protein)/NECAB (neuronal calcium-binding protein) family participate in neuronal calcium signaling. EF-CBP1 (N-terminal EF-hand calcium binding protein 1), also known as STIP-1 or neuronal calcium-binding protein 1 (NECAB1), is a 351 amino acid cytoplasmic protein that contains one antibiotic biosynthesis monooxygenase (ABM) domain and 2 EF-hand domains. Expressed in brain, EF-CBP1 interacts with copine 6 and Syntaxin, and exists as two alternatively spliced isoforms. The gene encoding EF-CBP1 maps to human chromosome 8, which consists of nearly 146 million base pairs, encodes over 800 genes and is associated with a variety of diseases and malignancies. Schizophrenia, bipolar disorder, Trisomy 8, Pfeiffer syndrome, congenital hypothyroidism, Waardenburg syndrome and some leukemias and lymphomas are thought to occur as a result of defects in specific genes that map to chromosome 8.

Application Notes

Optimal dilution of the N-terminal EF-hand calcium binding protein 1 antibody should be determined by the researcher.

Immunogen

Recombinant human NECAB1 protein was used as the immunogen for the N-terminal EF-hand calcium binding protein 1 antibody.

Storage

Aliquot the N-terminal EF-hand calcium binding protein 1 antibody and store frozen at -20oC or colder. Avoid repeated freeze-thaw cycles.