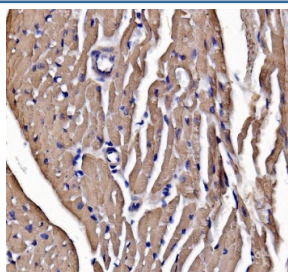


## Myosin Heavy Chain 3 Antibody / MYH3 / Myosin 3 (RQ6720)

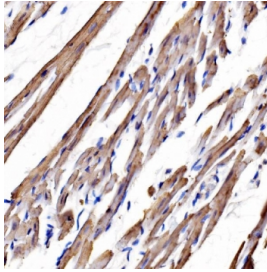
Catalog No.	Formulation	Size
RQ6720	0.5mg/ml if reconstituted with 0.2ml sterile DI water	100 ug

**Bulk quote request**

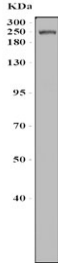
<b>Availability</b>	1-3 business days
<b>Species Reactivity</b>	Human, Mouse, Rat
<b>Format</b>	Antigen affinity purified
<b>Clonality</b>	Polyclonal (rabbit origin)
<b>Isotype</b>	Rabbit IgG
<b>Purity</b>	Antigen affinity purified
<b>Buffer</b>	Lyophilized from 1X PBS with 2% Trehalose
<b>UniProt</b>	P12847
<b>Localization</b>	Cytoplasmic
<b>Applications</b>	Western Blot : 1-2ug/ml Immunohistochemistry (FFPE) : 2-5ug/ml Flow Cytometry : 1-3ug/million cells Direct ELISA : 0.1-0.5ug/ml
<b>Limitations</b>	This Myosin Heavy Chain 3 antibody is available for research use only.



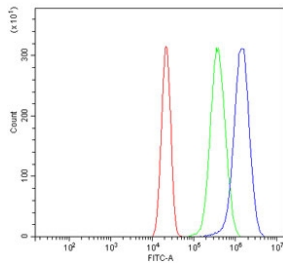
IHC staining of FFPE mouse heart tissue with Myosin Heavy Chain 3 antibody. HIER: boil tissue sections in pH8 EDTA for 20 min and allow to cool before testing.



IHC staining of FFPE rat heart tissue with Myosin Heavy Chain 3 antibody. HIER: boil tissue sections in pH8 EDTA for 20 min and allow to cool before testing.



Western blot testing of rat heart tissue with Myosin Heavy Chain 3 antibody. Predicted molecular weight ~224 kDa.



Flow cytometry testing of human U-2 OS cells with Myosin Heavy Chain 3 antibody at 1ug/million cells (blocked with goat sera); Red=cells alone, Green=isotype control, Blue=Myosin Heavy Chain 3 antibody.

## Description

Myosin-3 is a protein that in humans is encoded by the MYH3 gene. Myosin is a major contractile protein which converts chemical energy into mechanical energy through the hydrolysis of ATP. Myosin is a hexameric protein composed of a pair of myosin heavy chains (MYH) and two pairs of nonidentical light chains. This gene is a member of the MYH family and encodes a protein with an IQ domain and a myosin head-like domain. Mutations in this gene have been associated with two congenital contracture (arthrogryposis) syndromes, Freeman-Sheldon syndrome and Sheldon-Hall syndrome.

## Application Notes

Optimal dilution of the Myosin Heavy Chain 3 antibody should be determined by the researcher.

## Immunogen

Recombinant rat protein (amino acids K44-S119) was used as the immunogen for the Myosin Heavy Chain 3 antibody.

## Storage

After reconstitution, the Myosin Heavy Chain 3 antibody can be stored for up to one month at 4oC. For long-term, aliquot and store at -20oC. Avoid repeated freezing and thawing.

