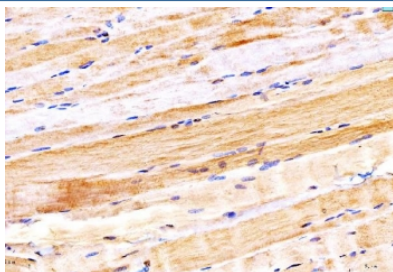


Myosin 6 Antibody / MyHC-alpha / MYH6 (RQ6780)

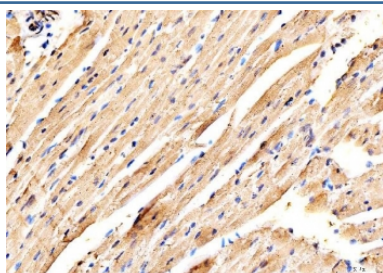
Catalog No.	Formulation	Size
RQ6780	0.5mg/ml if reconstituted with 0.2ml sterile DI water	100 ug

Bulk quote request

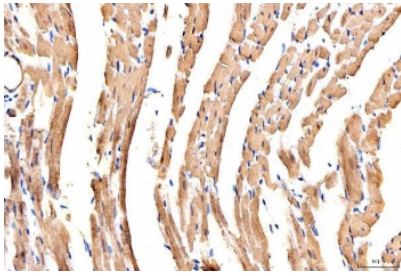
Availability	1-3 business days
Species Reactivity	Human, Mouse, Rat
Format	Antigen affinity purified
Clonality	Polyclonal (rabbit origin)
Isotype	Rabbit IgG
Purity	Antigen affinity purified
Buffer	Lyophilized from 1X PBS with 2% Trehalose
UniProt	P13533
Localization	Cytoplasmic
Applications	Western Blot : 1-2ug/ml Immunohistochemistry (FFPE) : 2-5ug/ml Flow Cytometry : 1-3ug/million cells
Limitations	This Myosin 6 antibody is available for research use only.



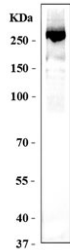
IHC staining of FFPE human heart tissue with Myosin 6 antibody. HIER: boil tissue sections in pH8 EDTA for 20 min and allow to cool before testing.



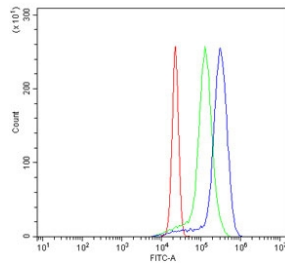
IHC staining of FFPE mouse heart tissue with Myosin 6 antibody. HIER: boil tissue sections in pH8 EDTA for 20 min and allow to cool before testing.



IHC staining of FFPE rat heart tissue with Myosin 6 antibody. HIER: boil tissue sections in pH8 EDTA for 20 min and allow to cool before testing.



Western blot testing of mouse heart tissue with Myosin 6 antibody. Predicted molecular weight ~224 kDa, routinely observed at 200-250 kDa.



Flow cytometry testing of human U937 cells with Myosin 6 antibody at 1ug/million cells (blocked with goat sera); Red=cells alone, Green=isotype control, Blue= Myosin 6 antibody.

Description

Myosin heavy chain, alpha isoform (MHC-alpha) is a protein that in humans is encoded by the MYH6 gene. Cardiac muscle myosin is a hexamer consisting of two heavy chain subunits, two light chain subunits, and two regulatory subunits. This gene encodes the alpha heavy chain subunit of cardiac myosin. The gene is located approximately 4kb downstream of the gene encoding the beta heavy chain subunit of cardiac myosin. Mutations in this gene cause familial hypertrophic cardiomyopathy and atrial septal defect 3.

Application Notes

Optimal dilution of the Myosin 6 antibody should be determined by the researcher.

Immunogen

Amino acids RTLEDQANEYRVKLEEAQRSLNDFTTQRAKLQ from the human protein were used as the immunogen for the Myosin 6 antibody.

Storage

After reconstitution, the Myosin 6 antibody can be stored for up to one month at 4oC. For long-term, aliquot and store at -20oC. Avoid repeated freezing and thawing.

