

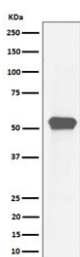
Myocyte enhancer factor 2A Antibody / MEF2A [clone 28M44] (RQ8377)

| Catalog No. | Formulation | Size |
|-------------|--|--------|
| RQ8377 | Antibody in PBS with 0.02% sodium azide, 50% glycerol and 0.4-0.5mg/ml BSA | 100 ul |

Recombinant **RABBIT MONOCLONAL**

[Bulk quote request](#)

| | |
|--------------------|--|
| Availability | 1-3 business days |
| Species Reactivity | Human |
| Format | Purified |
| Clonality | Recombinant Rabbit Monoclonal |
| Isotype | Rabbit IgG |
| Clone Name | 28M44 |
| Purity | Affinity chromatography |
| UniProt | Q02078 |
| Applications | Western Blot : 1:500-1:2000 |
| Limitations | This Myocyte enhancer factor 2A antibody is available for research use only. |



Western blot testing of human HeLa cell lysate with Myocyte enhancer factor 2A antibody. Predicted molecular weight: 46-55 kDa (multiple isoforms).

Description

Transcriptional activator which binds specifically to the MEF2 element, 5'-YTA[AT]4TAR-3', found in numerous muscle-specific genes. Also involved in the activation of numerous growth factor- and stress-induced genes. Mediates cellular functions not only in skeletal and cardiac muscle development, but also in neuronal differentiation and survival. Plays diverse roles in the control of cell growth, survival and apoptosis via p38 MAPK signaling in muscle-specific and/or growth factor-related transcription. [UniProt]

Application Notes

Optimal dilution of the Myocyte enhancer factor 2A antibody should be determined by the researcher.

Immunogen

A synthetic peptide derived from human Myocyte enhancer factor 2A protein was used as the immunogen for the Myocyte enhancer factor 2A antibody.

Storage

Store the Myocyte enhancer factor 2A antibody at -20oC.