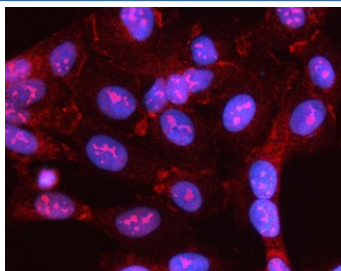


## MYL5 Antibody / Myosin light chain 5 (RQ8448)

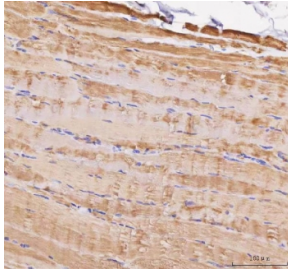
Catalog No.	Formulation	Size
RQ8448	0.5mg/ml if reconstituted with 0.2ml sterile DI water	100 ug

**Bulk quote request**

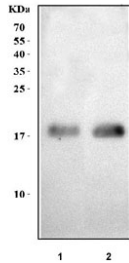
<b>Availability</b>	1-3 business days
<b>Species Reactivity</b>	Human, Mouse, Rat
<b>Format</b>	Antigen affinity purified
<b>Clonality</b>	Polyclonal (rabbit origin)
<b>Isotype</b>	Rabbit IgG
<b>Purity</b>	Antigen affinity purified
<b>Buffer</b>	Lyophilized from 1X PBS with 2% Trehalose
<b>UniProt</b>	Q02045
<b>Localization</b>	Cytoplasm, Nucleus
<b>Applications</b>	Western Blot : 0.5-1ug/ml Immunohistochemistry (FFPE) : 2-5ug/ml Immunofluorescence : 5ug/ml Flow Cytometry : 1-3ug/million cells ELISA : 0.1-0.5ug/ml
<b>Limitations</b>	This MYL5 antibody is available for research use only.



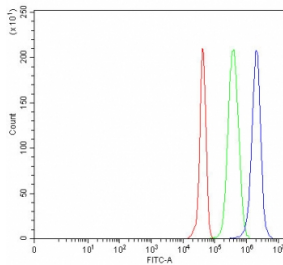
Immunofluorescent staining of FFPE human U-2 OS cells with MYL5 antibody (red) and DAPI nuclear stain (blue). HIER: steam section in pH6 citrate buffer for 20 min.



IHC staining of FFPE human skeletal muscle tissue with MYL5 antibody. HIER: boil tissue sections in pH8 EDTA for 20 min and allow to cool before testing.



Western blot testing of 1) rat skeletal muscle and 2) mouse skeletal muscle tissue lysate with MYL5 antibody. Predicted molecular weight ~19 kDa.



Flow cytometry testing of fixed and permeabilized human JK cells with MYL5 antibody at 1ug/million cells (blocked with goat sera); Red=cells alone, Green=isotype control, Blue=MYL5 antibody.

## Description

Myosin light chain 5 is a protein that, in humans, is encoded by the MYL5 gene. This gene encodes one of the myosin light chains, a component of the hexameric ATPase cellular motor protein myosin. Myosin is composed of two heavy chains, two nonphosphorylatable alkali light chains, and two phosphorylatable regulatory light chains. This gene product, one of the regulatory light chains, is expressed in fetal muscle and in adult retina, cerebellum, and basal ganglia.

## Application Notes

Optimal dilution of the MYL5 antibody should be determined by the researcher.

## Immunogen

An E.coli-derived human recombinant protein (K56-D157) was used as the immunogen for the MYL5 antibody.

## Storage

After reconstitution, the MYL5 antibody can be stored for up to one month at 4oC. For long-term, aliquot and store at -20oC. Avoid repeated freezing and thawing.

