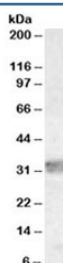


MyD88 Antibody (R34336)

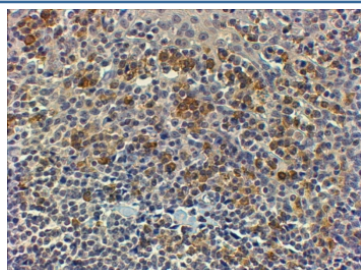
Catalog No.	Formulation	Size
R34336-100UG	0.5 mg/ml in 1X TBS, pH7.3, with 0.5% BSA (US sourced) and 0.02% sodium azide	100 ug

[Bulk quote request](#)

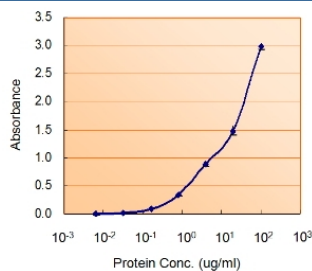
Availability	1-3 business days
Species Reactivity	Human
Predicted Reactivity	Dog, Mouse, Rat
Format	Antigen affinity purified
Clonality	Polyclonal (goat origin)
Isotype	Goat Ig
Purity	Antigen affinity
Gene ID	4615
Applications	Western Blot : 0.03-0.1ug/ml Immunohistochemistry (FFPE) : 4-6ug/ml Enzyme ImmunoAssay : used as capture for recombinant protein (coat at 5-10ug/ml) ELISA (peptide) LOD : 1:16000
Limitations	This MyD88 antibody is available for research use only.



Western blot testing of human thymus lysate with MyD88 antibody at 0.03ug/ml.
Predicted molecular weight ~33 kDa.



IHC staining of FFPE human tonsil with MyD88 antibody at 4ug/ml. HIER: steamed with pH9 Tris/EDTA buffer, HRP-staining. pH6 antigen retrieval is not sufficient.



Sandwich ELISA using the MyD88 antibody at 5ug/ml as the detect.

Description

Additional name(s) for this target protein: Myeloid differentiation primary response gene 88

Application Notes

Optimal dilution of the MyD88 antibody should be determined by the researcher.

Immunogen

Amino acids IKYKAMKKEFP were used as the immunogen for this MyD88 antibody.

Storage

Aliquot and store the MyD88 antibody at -20oC.