

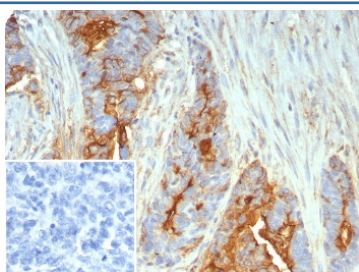
Mucin 1 Antibody / MUC1 [clone MUC1/7797R] (V4748)

Catalog No.	Formulation	Size
V4748-100UG	0.2 mg/ml in 1X PBS with 0.1 mg/ml BSA (US sourced), 0.05% sodium azide	100 ug
V4748-20UG	0.2 mg/ml in 1X PBS with 0.1 mg/ml BSA (US sourced), 0.05% sodium azide	20 ug
V4748SAF-100UG	1 mg/ml in 1X PBS; BSA free, sodium azide free	100 ug

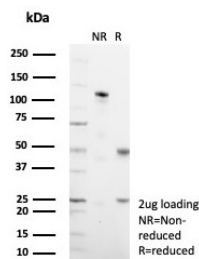
Recombinant **RABBIT MONOCLONAL**

[Bulk quote request](#)

Availability	1-3 business days
Species Reactivity	Human
Format	Purified
Clonality	Recombinant Rabbit Monoclonal
Isotype	Rabbit IgG, kappa
Clone Name	MUC1/7797R
Purity	Protein A/G affinity
UniProt	P15941
Localization	Cytoplasm, Cell surface
Applications	Immunohistochemistry (FFPE) : 1-2ug/ml for 30 min at RT
Limitations	This Mucin 1 antibody is available for research use only.



IHC staining of FFPE human ovarian cancer tissue with Mucin 1 antibody (clone MUC1/7797R). Inset: PBS used in place of primary Ab (secondary Ab negative control).
HIER: boil tissue sections in pH 9 10mM Tris with 1mM EDTA for 20 min and allow to cool before testing.



SDS-PAGE analysis of purified, BSA-free Mucin 1 antibody (clone MUC1/7797R) as confirmation of integrity and purity.

Description

Mucin 1, cell surface associated (MUC1) or polymorphic epithelial mucin (PEM) is a protein encoded by the MUC1 gene in humans. It serves a protective function by binding to pathogens and also functions in a cell signaling capacity.

Application Notes

Optimal dilution of the Mucin 1 antibody should be determined by the researcher.

Immunogen

Recombinant full-length human MUC1 protein was used as the immunogen for the Mucin 1 antibody.

Storage

Aliquot the Mucin 1 antibody and store frozen at -20oC or colder. Avoid repeated freeze-thaw cycles.