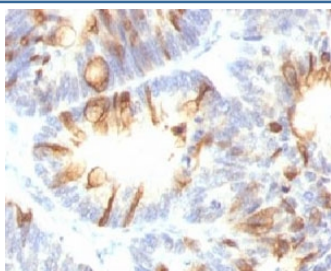


MUC2 Antibody [clone MUCN2-1] (V7125)

Catalog No.	Formulation	Size
V7125-100UG	0.2 mg/ml in 1X PBS with 0.1 mg/ml BSA (US sourced) and 0.05% sodium azide	100 ug
V7125-20UG	0.2 mg/ml in 1X PBS with 0.1 mg/ml BSA (US sourced) and 0.05% sodium azide	20 ug
V7125SAF-100UG	1 mg/ml in 1X PBS; BSA free, sodium azide free	100 ug
V7125IHC-7ML	Prediluted in 1X PBS with 0.1 mg/ml BSA (US sourced) and 0.05% sodium azide; *For IHC use only*	7 ml

Bulk quote request

Availability	1-3 business days
Species Reactivity	Human
Format	Purified
Clonality	Monoclonal (mouse origin)
Isotype	Mouse IgG1, kappa
Clone Name	MUCN2-1
Purity	Protein G affinity chromatography
UniProt	Q02817
Localization	Cytoplasmic and cell surface
Applications	Immunohistochemistry (FFPE) : 1-2ug/ml for 30 min at RT Prediluted IHC Only Format : incubate for 30 min at RT (1)
Limitations	This MUC2 antibody is available for research use only.



IHC testing of FFPE human colon carcinoma with MUC2 antibody (clone MLP/842). Staining of formalin-fixed tissues requires boiling tissue sections in 10mM Tris-HCl buffer, pH 10 for 10-20 min followed by cooling at RT for 20 minutes.

Description

Mucin 2 coats the epithelia of the intestines, airways, and other mucus membrane-containing organs. Thought to provide a protective, lubricating barrier against particles and infectious agents at mucosal surfaces. Major constituent of both the inner and outer mucus layers of the colon and may play a role in excluding bacteria from the inner mucus layer. [UniProt]

Application Notes

Titration of the MUC2 antibody may be required for optimal performance.

1. The prediluted format is supplied in a dropper bottle and is optimized for use in IHC. After epitope retrieval step (if required), drip mAb solution onto the tissue section and incubate at RT for 30 min.

Immunogen

Recombinant human protein was used as the immunogen for the MUC2 antibody.

Storage

Store the MUC2 antibody at 2-8°C (with azide) or aliquot and store at -20°C or colder (without azide).