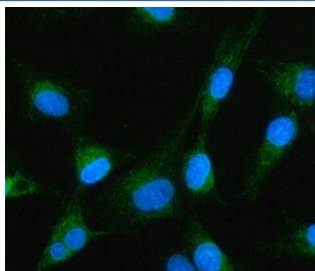


## MTF1 Antibody / Metal regulatory transcription factor 1 (RQ8540)

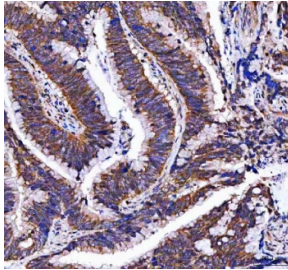
Catalog No.	Formulation	Size
RQ8540	0.5mg/ml if reconstituted with 0.2ml sterile DI water	100 ug

**Bulk quote request**

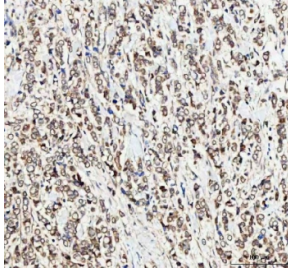
<b>Availability</b>	1-3 days
<b>Species Reactivity</b>	Human, Mouse, Rat
<b>Format</b>	Antigen affinity purified
<b>Clonality</b>	Polyclonal (rabbit origin)
<b>Isotype</b>	Rabbit IgG
<b>Purity</b>	Antigen affinity purified
<b>Buffer</b>	Lyophilized from 1X PBS with 2% Trehalose
<b>UniProt</b>	Q14872
<b>Localization</b>	Nuclear, cytoplasmic
<b>Applications</b>	Western Blot : 0.5-1ug/ml Immunohistochemistry (FFPE) : 2-5ug/ml Immunofluorescence : 5ug/ml Flow Cytometry : 1-3ug/million cells ELISA : 0.1-0.5ug/ml
<b>Limitations</b>	This MTF1 antibody is available for research use only.



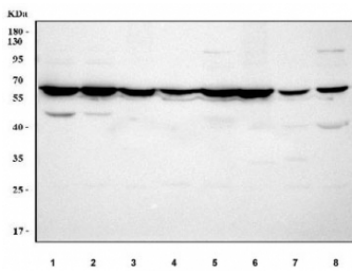
Immunofluorescent staining of FFPE human U-87 MG cells with MTF1 antibody (green) and DAPI nuclear stain (blue). HIER: steam section in pH6 citrate buffer for 20 min.



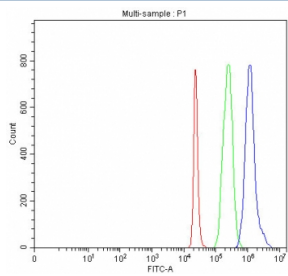
IHC staining of FFPE human colorectal adenocarcinoma tissue with MTF1 antibody. HIER: boil tissue sections in pH8 EDTA for 20 min and allow to cool before testing.



IHC staining of FFPE human breast cancer tissue with MTF1 antibody. HIER: boil tissue sections in pH8 EDTA for 20 min and allow to cool before testing.



Western blot testing of 1) human Jurkat, 2) human 293T, 3) rat liver, 4) rat brain, 5) rat heart, 6) mouse liver, 7) mouse brain and 8) mouse heart tissue lysate with MTF1 antibody. Predicted molecular weight ~81 kDa, commonly observed at 65-81 kDa.



Flow cytometry testing of fixed and permeabilized human 293T cells with MTF1 antibody at 1ug/million cells (blocked with goat sera); Red=cells alone, Green=isotype control, Blue= MTF1 antibody.

## Description

Metal regulatory transcription factor 1 is a protein that in humans is encoded by the MTF1 gene. This gene encodes a transcription factor that induces expression of metallothioneins and other genes involved in metal homeostasis in response to heavy metals such as cadmium, zinc, copper, and silver. The protein is a nucleocytoplasmic shuttling protein that accumulates in the nucleus upon heavy metal exposure and binds to promoters containing a metal-responsive element (MRE).

## Application Notes

Optimal dilution of the MTF1 antibody should be determined by the researcher.

## Immunogen

An E.coli-derived human recombinant protein (amino acids Y44-K753) was used as the immunogen for the MTF1 antibody.

## Storage

After reconstitution, the MTF1 antibody can be stored for up to one month at 4oC. For long-term, aliquot and store at -20oC. Avoid repeated freezing and thawing.

