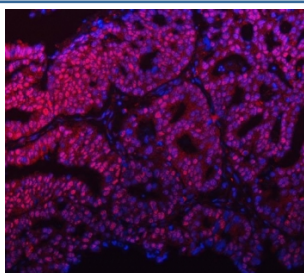


mSin3A Antibody / SIN3A (RQ7675)

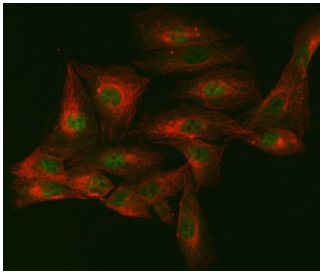
Catalog No.	Formulation	Size
RQ7675	0.5mg/ml if reconstituted with 0.2ml sterile DI water	100 ug

Bulk quote request

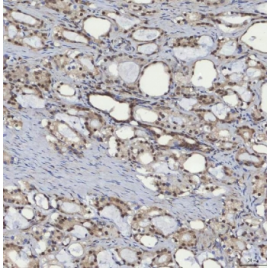
Availability	1-3 business days
Species Reactivity	Human, Rat
Format	Antigen affinity purified
Clonality	Polyclonal (rabbit origin)
Isotype	Rabbit IgG
Purity	Antigen affinity purified
Buffer	Lyophilized from 1X PBS with 2% Trehalose
UniProt	Q96ST3
Localization	Nuclear
Applications	Western Blot : 0.5-1ug/ml Immunohistochemistry (FFPE) : 2-5ug/ml Flow Cytometry : 1-3ug/million cells Immunofluorescence : 5ug/ml Direct ELISA : 0.1-0.5ug/ml
Limitations	This mSin3A antibody is available for research use only.



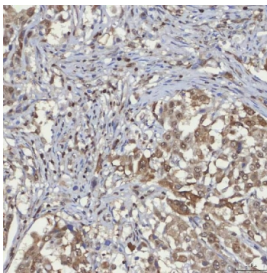
Immunofluorescent staining of FFPE human ovarian cancer tissue with mSin3A antibody (red) and DAPI (blue). HIER: steam section in pH8 EDTA buffer for 20 min.



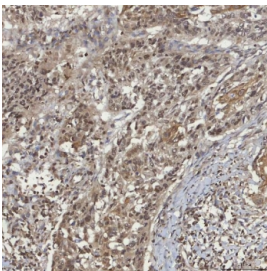
Immunofluorescent staining of FFPE human U-2 OS cells with mSin3A antibody (green) and Alpha Tubulin mAb (red). HIER: steam section in pH6 citrate buffer for 20 min.



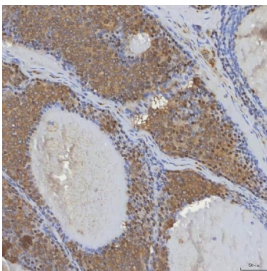
IHC staining of FFPE human prostate adenocarcinoma tissue with mSin3A antibody. HIER: boil tissue sections in pH8 EDTA for 20 min and allow to cool before testing.



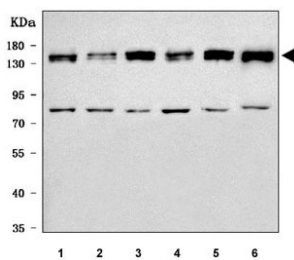
IHC staining of FFPE human lung adenocarcinoma tissue with mSin3A antibody. HIER: boil tissue sections in pH8 EDTA for 20 min and allow to cool before testing.



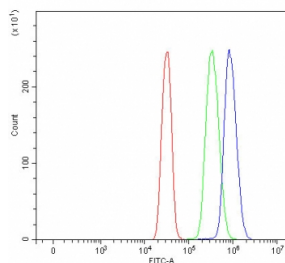
IHC staining of FFPE human larynx squamous cell carcinoma tissue with mSin3A antibody. HIER: boil tissue sections in pH8 EDTA for 20 min and allow to cool before testing.



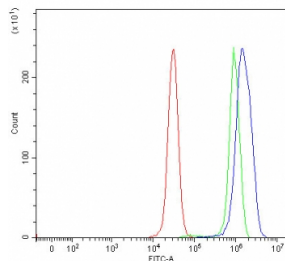
IHC staining of FFPE human breast cancer tissue with mSin3A antibody. HIER: boil tissue sections in pH8 EDTA for 20 min and allow to cool before testing.



Western blot testing of 1) human HeLa, 2) human Jurkat, 3) human 293T, 4) human K562, 5) human MCF7 and 6) rat PC-12 cell lysate with mSin3A antibody. Predicted molecular weight ~145 kDa.



Flow cytometry testing of human SiHa cells with mSin3A antibody at 1ug/million cells (blocked with goat sera); Red=cells alone, Green=isotype control, Blue= mSin3A antibody.



Flow cytometry testing of human 293T cells with mSin3A antibody at 1ug/million cells (blocked with goat sera); Red=cells alone, Green=isotype control, Blue= mSin3A antibody.

Description

Paired amphipathic helix protein Sin3a is a protein that in humans is encoded by the SIN3A gene. The protein encoded by this gene is a transcriptional regulatory protein. It contains paired amphipathic helix (PAH) domains, which are important for protein-protein interactions and may mediate repression by the Mad-Max complex.

Application Notes

Optimal dilution of the mSin3A antibody should be determined by the researcher.

Immunogen

E. coli-derived recombinant human protein (amino acids Q8-E918) was used as the immunogen for the mSin3A antibody.

Storage

After reconstitution, the mSin3A antibody can be stored for up to one month at 4oC. For long-term, aliquot and store at -20oC. Avoid repeated freezing and thawing.