

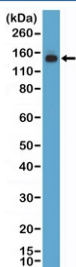
## MSH6 Antibody [clone RM376] (R20395)

Catalog No.	Formulation	Size
R20395-0.1ML	Antibody in PBS with 50% glycerol, 1% BSA and 0.09% sodium azide	100 ul

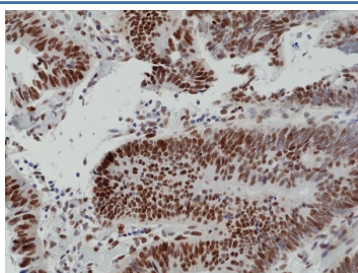
Recombinant **RABBIT MONOCLONAL**

[Bulk quote request](#)

Availability	1-3 business days
Species Reactivity	Human
Format	Purified
Clonality	Recombinant Rabbit Monoclonal
Isotype	Rabbit IgG
Clone Name	RM376
Purity	Protein A purified from animal origin-free supernatant
UniProt	P52701
Localization	Nuclear
Applications	Immunohistochemistry (FFPE) : 1:100-1:500 Western Blot : 1:1000-1:2000
Limitations	This recombinant MSH6 antibody is available for research use only.



Western blot testing of human HEK293 cell lysate with recombinant MSH6 antibody at 1:1000 dilution. Expected molecular weight: 120-160 kDa depending on phosphorylation level.



IHC staining of FFPE human colon cancer tissue with recombinant MSH6 antibody at 1:100.

## Description

This antibody reacts to human DNA mismatch repair protein Msh6.

## Application Notes

The stated application concentrations are suggested starting points. Titration of the recombinant MSH6 antibody may be required due to differences in protocols and secondary/substrate sensitivity.

## Immunogen

A mammalian cell-expressed recombinant protein fragment of human MSH6 was used as the immunogen for the recombinant MSH6 antibody.

## Storage

Store the recombinant MSH6 antibody at -20oC.