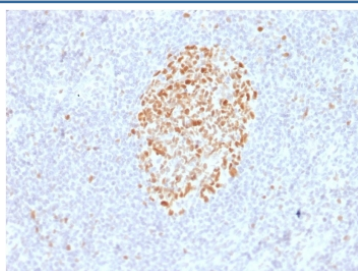


MSH6 Antibody [clone MSH6/2927] (V7829)

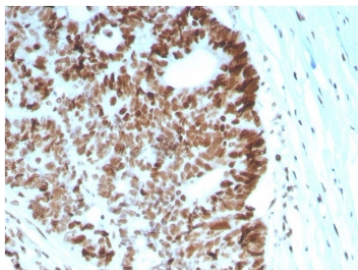
| Catalog No. | Formulation | Size |
|----------------|--|--------|
| V7829-100UG | 0.2 mg/ml in 1X PBS with 0.1 mg/ml BSA (US sourced) and 0.05% sodium azide | 100 ug |
| V7829-20UG | 0.2 mg/ml in 1X PBS with 0.1 mg/ml BSA (US sourced) and 0.05% sodium azide | 20 ug |
| V7829SAF-100UG | 1 mg/ml in 1X PBS; BSA free, sodium azide free | 100 ug |

[Bulk quote request](#)

| | |
|---------------------------|---|
| Availability | 1-3 business days |
| Species Reactivity | Human |
| Format | Purified |
| Clonality | Monoclonal (mouse origin) |
| Isotype | Mouse IgG2b, kappa |
| Clone Name | MSH6/2927 |
| Purity | Protein G affinity chromatography |
| UniProt | P52701 |
| Localization | Nuclear |
| Applications | ELISA (order BSA-free Format For Coating) : Immunohistochemistry (FFPE) : 1-2ug/ml |
| Limitations | This MSH6 antibody is available for research use only. |

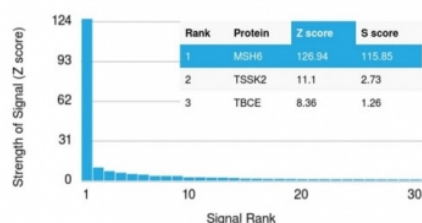


IHC staining of FFPE human lymph node with MSH6 antibody (clone MSH6/2927).
 HIER: boil tissue sections in pH 9 10mM Tris with 1mM EDTA for 10-20 min and allow to cool before testing.

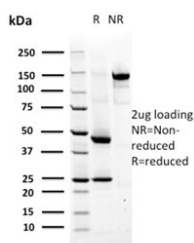


IHC staining of FFPE human colon carcinoma with MSH6 antibody (clone MSH6/2927).
 HIER: boil tissue sections in pH 9 10mM Tris with 1mM EDTA for 10-20 min and allow to cool before testing.

Human Protein Microarray Specificity Validation



Analysis of HuProt(TM) microarray containing more than 19,000 full-length human proteins using MSH6 antibody (clone MSH6/2927). These results demonstrate the foremost specificity of the MSH6/2927 mAb. **Z- and S- score:** The Z-score represents the strength of a signal that an antibody (in combination with a fluorescently-tagged anti-IgG secondary Ab) produces when binding to a particular protein on the HuProt(TM) array. Z-scores are described in units of standard deviations (SD's) above the mean value of all signals generated on that array. If the targets on the HuProt(TM) are arranged in descending order of the Z-score, the S-score is the difference (also in units of SD's) between the Z-scores. The S-score therefore represents the relative target specificity of an Ab to its intended target.



SDS-PAGE analysis of purified, BSA-free MSH6 antibody (clone MSH6/2927) as confirmation of integrity and purity.

Description

The finding that mutations in DNA mismatch repair genes are associated with hereditary nonpolyposis colorectal cancer (HNPCC) has resulted in considerable interest in the understanding of the mechanism of DNA mismatch repair. Initially, inherited mutations in the MSH2 and MLH1 homologs of the bacterial DNA mismatch repair genes mutS and mutL were demonstrated at high frequency in HNPCC and were shown to be associated with microsatellite instability. A member of the mismatch repair family, GTBP (also designated MSH6), is an MSH2-related protein that binds to DNA containing G/T mismatches. Findings suggest that the mismatch-binding factor in human cells is composed of a heterodimer of GTBP and MSH2.

Application Notes

Optimal dilution of the MSH6 antibody should be determined by the researcher.

Immunogen

A recombinant human partial protein (amino acids 374-540) was used as the immunogen for the MSH6 antibody.

Storage

Store the MSH6 antibody at 2-8°C (with azide) or aliquot and store at -20°C or colder (without azide).

